

MechaTronix LED Cooling Solutions for BJB LED holders and connectors

- Validated Thermal Designs
- Adaptable to your Needs
- Functional & Aesthetic



MTx
MechaTronix

MechaTronix LED Cooling Solutions for BJB LED holders and connectors

MechaTronix offers a wide range of LED coolers, specifically developed and thermally validated for all major brands of LED modules.

Our ECO partnerships also include close cooperations with key manufacturers of LED accessories like lenses, reflectors and LED holders.

Mechanical compatibility of all components is what our MechaTronix LED coolers stand for. This document provides an easy overview of all LED coolers which are compatible with the BJB LED holders and LED connectors.

With the combination of these LED coolers and the BJB LED holders, the assembly of LED COB's becomes an easy plug-and-play job without soldering and with a guaranteed perfect thermal fitting on the heat sink.



LPF4768-ZHP



LED Pin Fin heat sink
Power Pd 13W
Thermal resistance Rth 3.9°C/W
ø47mm - h68mm

Compatible BJB LED holders

47.319.6060	47.319.6200	47.319.2051	47.319.2151
47.319.6101	47.319.6214	47.319.2070	47.319.2170
47.319.6111	47.319.2011	47.319.2080	47.319.2224
47.319.6120	47.319.2021	47.319.2090	
47.319.6180	47.319.2033	47.319.2131	
47.319.6190	47.319.2040	47.319.2141	

LPF6050-ZHC



LED Pin Fin heat sink
Power Pd 12W
Thermal resistance Rth 4.0°C/W
ø60mm - h50mm

Compatible BJB LED holders

47.319.6060	47.319.6200	47.319.2051	47.319.2151
47.319.6101	47.319.6214	47.319.2070	47.319.2170
47.319.6111	47.319.2011	47.319.2080	47.319.2224
47.319.6120	47.319.2021	47.319.2090	
47.319.6180	47.319.2033	47.319.2131	
47.319.6190	47.319.2040	47.319.2141	

LPF6768-ZHP



LED Pin Fin heat sink
Power Pd 24W
Thermal resistance Rth 2.1°C/W
ø67mm - h68mm

Compatible BJB LED holders

47.319.6060	47.319.6200	47.319.2051	47.319.2151
47.319.6101	47.319.6214	47.319.2070	47.319.2170
47.319.6111	47.319.2011	47.319.2080	47.319.2224
47.319.6120	47.319.2021	47.319.2090	
47.319.6180	47.319.2033	47.319.2131	
47.319.6190	47.319.2040	47.319.2141	

LPF8050-ZHC



LED Pin Fin heat sink
Power Pd 21W
Thermal resistance Rth 2.34°C/W
ø80mm - h50mm

Compatible BJB LED holders

47.319.2011	47.319.2080	47.319.2224
47.319.2021	47.319.2090	
47.319.2033	47.319.2131	
47.319.2040	47.319.2141	
47.319.2051	47.319.2151	
47.319.2070	47.319.2170	

LPF8668-ZHC



LED Pin Fin heat sink
Power Pd 34W
Thermal Resistance Rth 1.46°C/W
ø86mm - h68mm

Compatible BJB LED holders

47.319.2011	47.319.2080	47.319.2224
47.319.2021	47.319.2090	
47.319.2033	47.319.2131	
47.319.2040	47.319.2141	
47.319.2051	47.319.2151	
47.319.2070	47.319.2170	

LPF11180-ZHE



LED Pin Fin heat sink
Power Pd 50W
Thermal Resistance Rth 1.07°C/W
ø111mm - h80mm

Compatible BJB LED holders

47.319.2011	47.319.2080	47.319.2224
47.319.2021	47.319.2090	
47.319.2033	47.319.2131	
47.319.2040	47.319.2141	
47.319.2051	47.319.2151	
47.319.2070	47.319.2170	

ModuLED Pico 4750



Modular LED Star heat sink
Power Pd 9.6W
Thermal resistance Rth 5.3°C/W
ø47mm - h50mm

Compatible BJB LED holders

47.319.6060	47.319.6200	47.319.2051	47.319.2151
47.319.6101	47.319.6214	47.319.2070	47.319.2170
47.319.6111	47.319.2011	47.319.2080	47.319.2224
47.319.6120	47.319.2021	47.319.2090	
47.319.6180	47.319.2033	47.319.2131	
47.319.6190	47.319.2040	47.319.2141	

ModuLED Pico 4780



Modular LED Star heat sink
Power Pd 11.9W
Thermal resistance Rth 4.2°C/W
ø47mm - h80mm

Compatible BJB LED holders

47.319.6060	47.319.6200	47.319.2051	47.319.2151
47.319.6101	47.319.6214	47.319.2070	47.319.2170
47.319.6111	47.319.2011	47.319.2080	47.319.2224
47.319.6120	47.319.2021	47.319.2090	
47.319.6180	47.319.2033	47.319.2131	
47.319.6190	47.319.2040	47.319.2141	

ModuLED Nano 7050



Modular LED Star heat sink
Power Pd 22.7W
Thermal resistance Rth 2.2°C/W
ø70mm - h50mm

Compatible BJB LED holders

47.319.6060	47.319.6200	47.319.2051	47.319.2151
47.319.6101	47.319.6214	47.319.2070	47.319.2170
47.319.6111	47.319.2011	47.319.2080	47.319.2224
47.319.6120	47.319.2021	47.319.2090	
47.319.6180	47.319.2033	47.319.2131	
47.319.6190	47.319.2040	47.319.2141	

ModuLED Nano 7080



Modular LED Star heat sink
Power Pd 27.8W
Thermal resistance Rth 1.8°C/W
ø70mm - h80mm

Compatible BJB LED holders

47.319.6060	47.319.6200	47.319.2051	47.319.2151
47.319.6101	47.319.6214	47.319.2070	47.319.2170
47.319.6111	47.319.2011	47.319.2080	47.319.2224
47.319.6120	47.319.2021	47.319.2090	
47.319.6180	47.319.2033	47.319.2131	
47.319.6190	47.319.2040	47.319.2141	

ModuLED Micro 8630



Modular LED Star heat sink
Power Pd 28W
Thermal resistance Rth 1.8°C/W
ø86mm - h30mm

Compatible BJB LED holders

47.319.6060	47.319.6200	47.319.2051	47.319.2151
47.319.6101	47.319.6214	47.319.2070	47.319.2170
47.319.6111	47.319.2011	47.319.2080	47.319.2224
47.319.6120	47.319.2021	47.319.2090	
47.319.6180	47.319.2033	47.319.2131	
47.319.6190	47.319.2040	47.319.2141	

ModuLED Micro 8650



Modular LED Star heat sink
Power Pd 33W
Thermal resistance Rth 1.5°C/W
ø86mm - h50mm

Compatible BJB LED holders

47.319.6060	47.319.6200	47.319.2051	47.319.2151
47.319.6101	47.319.6214	47.319.2070	47.319.2170
47.319.6111	47.319.2011	47.319.2080	47.319.2224
47.319.6120	47.319.2021	47.319.2090	
47.319.6180	47.319.2033	47.319.2131	
47.319.6190	47.319.2040	47.319.2141	

ModuLED Micro 8680



Modular LED Star heat sink
Power Pd 42W
Thermal resistance Rth 1.2°C/W
ø86mm - h80mm

Compatible BJB LED holders

47.319.6060	47.319.6200	47.319.2051	47.319.2151
47.319.6101	47.319.6214	47.319.2070	47.319.2170
47.319.6111	47.319.2011	47.319.2080	47.319.2224
47.319.6120	47.319.2021	47.319.2090	
47.319.6180	47.319.2033	47.319.2131	
47.319.6190	47.319.2040	47.319.2141	

ModuLED 9950



Modular LED Star heat sink
Power Pd 37.3W
Thermal resistance Rth 1.34°C/W
ø99mm - h50mm

Compatible BJB LED holders

47.319.2011	47.319.2080	47.319.2224
47.319.2021	47.319.2090	
47.319.2033	47.319.2131	
47.319.2040	47.319.2141	
47.319.2051	47.319.2151	
47.319.2070	47.319.2170	

ModuLED 9980



Modular LED Star heat sink
Power Pd 48.9W
Thermal resistance Rth 1.02°C/W
ø99mm - h80mm

Compatible BJB LED holders

47.319.2011	47.319.2080	47.319.2224
47.319.2021	47.319.2090	
47.319.2033	47.319.2131	
47.319.2040	47.319.2141	
47.319.2051	47.319.2151	
47.319.2070	47.319.2170	

ModuLED Xtra 9950



Modular LED Star heat sink
Power Pd 37.3W
Thermal resistance Rth 1.34°C/W
ø99mm - h50mm

Compatible BJB LED holders

47.319.6060	47.319.6214	47.319.2080	28.107.2001
47.319.6101	47.319.2011	47.319.2090	28.107.2002
47.319.6111	47.319.2021	47.319.2131	28.301.1001
47.319.6120	47.319.2033	47.319.2141	28.301.1002
47.319.6180	47.319.2040	47.319.2151	28.301.1005
47.319.6190	47.319.2051	47.319.2170	
47.319.6200	47.319.2070	47.319.2224	

ModuLED Xtra 9980



Modular LED Star heat sink
Power Pd 48.9W
Thermal resistance Rth 1.02 °C/W
ø99mm - h80mm

Compatible BJB LED holders

47.319.6060	47.319.6214	47.319.2080	28.107.2001
47.319.6101	47.319.2011	47.319.2090	28.107.2002
47.319.6111	47.319.2021	47.319.2131	28.301.1001
47.319.6120	47.319.2033	47.319.2141	28.301.1002
47.319.6180	47.319.2040	47.319.2151	28.301.1005
47.319.6190	47.319.2051	47.319.2170	
47.319.6200	47.319.2070	47.319.2224	

ModuLED Mega 13420



Modular LED Star heat sink
Power Pd 38W
Thermal resistance Rth 1.32°C/W
ø134mm - h20mm

Compatible BJB LED holders

47.319.2011	47.319.2080	47.319.2224
47.319.2021	47.319.2090	
47.319.2033	47.319.2131	
47.319.2040	47.319.2141	
47.319.2051	47.319.2151	
47.319.2070	47.319.2170	

ModuLED Mega 13450-HBG



High Bay LED cooler with direct mounting holes for Mean Well HBG series driver
Power Pd 57W
Thermal resistance Rth 0.88°C/W
ø134mm - h50mm

Compatible BJB LED holders

47.319.2011	47.319.2080	47.319.2224
47.319.2021	47.319.2090	
47.319.2033	47.319.2131	
47.319.2040	47.319.2141	
47.319.2051	47.319.2151	
47.319.2070	47.319.2170	

ModuLED Mega 134100-HBG



High Bay LED cooler with direct mounting holes for Mean Well HBG series driver
Power Pd 75W
Thermal resistance Rth 0.67°C/W
ø134mm - h100mm

Compatible BJB LED holders

47.319.2011	47.319.2080	47.319.2224
47.319.2021	47.319.2090	
47.319.2033	47.319.2131	
47.319.2040	47.319.2141	
47.319.2051	47.319.2151	
47.319.2070	47.319.2170	

ModuLED Giga 15220



Modular LED Star heat sink
Power Pd 43W
Thermal resistance Rth 1.17°C/W
ø152mm - h20mm

Compatible BJB LED holders

47.319.2011	47.319.2080	47.319.2224
47.319.2021	47.319.2090	
47.319.2033	47.319.2131	
47.319.2040	47.319.2141	
47.319.2051	47.319.2151	
47.319.2070	47.319.2170	

ModuLED Giga 15250



Modular LED Star heat sink
Power Pd 72W
Thermal resistance Rth 0.7°C/W
ø152mm - h50mm

Compatible BJB LED holders

47.319.2011	47.319.2080	47.319.2224
47.319.2021	47.319.2090	
47.319.2033	47.319.2131	
47.319.2040	47.319.2141	
47.319.2051	47.319.2151	
47.319.2070	47.319.2170	

ModuLED Giga 152100-HBG



High Bay LED cooler with direct mounting holes for Mean Well HBG series driver
Power Pd 95W
Thermal resistance Rth 0.53°C/W
ø152mm - h100mm

Compatible BJB LED holders

47.319.2011	47.319.2080	47.319.2224
47.319.2021	47.319.2090	
47.319.2033	47.319.2131	
47.319.2040	47.319.2141	
47.319.2051	47.319.2151	
47.319.2070	47.319.2170	

ModuLED Giga 152150-HBG



High Bay LED cooler with direct mounting holes for Mean Well HBG series driver
Power Pd 110W
Thermal resistance Rth 0.46°C/W
ø152mm - h150mm

Compatible BJB LED holders

47.319.2011	47.319.2080	47.319.2224
47.319.2021	47.319.2090	
47.319.2033	47.319.2131	
47.319.2040	47.319.2141	
47.319.2051	47.319.2151	
47.319.2070	47.319.2170	

CoolBay® Giga-A



High Bay LED cooler with CoolTube® heat tube and direct mounting holes for Mean Well HBG series driver
Power Pd 150W
Thermal resistance Rth 0.34°C/W
ø152mm - h200mm

Compatible BJB LED holders

47.319.2011	47.319.2080	47.319.2224
47.319.2021	47.319.2090	47.319.4160
47.319.2033	47.319.2131	
47.319.2040	47.319.2141	
47.319.2051	47.319.2151	
47.319.2070	47.319.2170	

CoolBay® Tera-A



High Bay LED cooler with CoolTube® heat tube and direct mounting holes for Mean Well HBG series driver
Power Pd 228W
Thermal resistance Rth 0.22°C/W
ø192mm - h250mm

Compatible BJB LED holders

47.319.2011	47.319.2080	47.319.2224
47.319.2021	47.319.2090	
47.319.2033	47.319.2131	
47.319.2040	47.319.2141	
47.319.2051	47.319.2151	
47.319.2070	47.319.2170	

IceLED 450



Modular Active LED Cooler
Power Pd 85.5W
Thermal Resistance Rth 0.58°C/W
ø99mm - h45mm

Compatible BJB LED holders

47.319.2011	47.319.2080	47.319.2224
47.319.2021	47.319.2090	
47.319.2033	47.319.2131	
47.319.2040	47.319.2141	
47.319.2051	47.319.2151	
47.319.2070	47.319.2170	

IceLED 550



Modular Active LED Cooler
Power Pd 109W
Thermal Resistance Rth 0.46°C/W
ø99mm - h55mm

Compatible BJB LED holders

47.319.2011	47.319.2080	47.319.2224
47.319.2021	47.319.2090	
47.319.2033	47.319.2131	
47.319.2040	47.319.2141	
47.319.2051	47.319.2151	
47.319.2070	47.319.2170	

IceLED Xtra 550



Modular Active LED Cooler
Power Pd 109W
Thermal Resistance Rth 0.46°C/W
ø99mm - h55mm

Compatible BJB LED holders

47.319.6060	47.319.6214	47.319.2080	28.107.2001
47.319.6101	47.319.2011	47.319.2090	28.107.2002
47.319.6111	47.319.2021	47.319.2131	28.301.1001
47.319.6120	47.319.2033	47.319.2141	28.301.1002
47.319.6180	47.319.2040	47.319.2151	28.301.1005
47.319.6190	47.319.2051	47.319.2170	
47.319.6200	47.319.2070	47.319.2224	

IceLED Ultra



Modular Active LED Cooler
Power Pd 200W
Thermal Resistance Rth 0.25°C/W
ø99mm - h75mm

Compatible BJB LED holders

47.319.2011	47.319.2080	47.319.2224
47.319.2021	47.319.2090	
47.319.2033	47.319.2131	
47.319.2040	47.319.2141	
47.319.2051	47.319.2151	
47.319.2070	47.319.2170	

IceLED Xtra Ultra



Modular Active LED Cooler
Power Pd 200W
Thermal Resistance Rth 0.25°C/W
ø99mm - h75mm

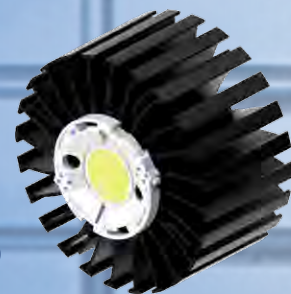
Compatible BJB LED holders

47.319.6060	47.319.6200	47.319.2051	47.319.2151
47.319.6101	47.319.6214	47.319.2070	47.319.2170
47.319.6111	47.319.2011	47.319.2080	47.319.2224
47.319.6120	47.319.2021	47.319.2090	
47.319.6180	47.319.2033	47.319.2131	
47.319.6190	47.319.2040	47.319.2141	

BJB Zhaga Book 3 mountable LED holders

MechaTronix compatible LED coolers

- LPF4768-ZHP
- LPF6050-ZHC
- LPF6768-ZHP
- LPF8050-ZHC
- LPF8668-ZHC
- LPF11180-ZHE
- ModuLED Pico 4750
- ModuLED Pico 4780
- ModuLED Nano 7050
- ModuLED Nano 7080
- ModuLED Micro 8630
- ModuLED Micro 8650
- ModuLED Micro 8680
- ModuLED 9950
- ModuLED 9980
- ModuLED Xtra 9950
- ModuLED Xtra 9980
- ModuLED Mega 13420
- ModuLED Mega 13450
- ModuLED Mega 134100-HBG
- ModuLED Giga 15220
- ModuLED Giga 15250
- ModuLED Giga 152100-HBG
- ModuLED Giga 152150-HBG
- CoolBay® Giga-A
- CoolBay® Tera-A
- IceLED 450
- IceLED 550
- IceLED Xtra 550
- IceLED Ultra
- IceLED Xtra Ultra



Screw fixing - Housing: PBT - Contacts: CuSn - Rating: 3A / 150 VDC

BJB Spotlight connectors 47.319.2011



Suitable for the following LED models:
- Lumileds Luxeon 1204 / 1205 / 1208
- Sharp Mega Zenigata

BJB Spotlight connectors 47.319.2051



Suitable for the following LED models:
- Sharp Tiger Zenigata

BJB Spotlight connectors 47.319.2021



Suitable for the following LED models:
- Citizen Citiled CLL032 / CLU034 / CLU036 / CLU038 / CLU710 / CLU720
- Edison EdiPower II & III HM16 / HM24 / HM30
- Everlight Xuan1919
- Luminus XNOVA™ CXM11 (ACxx) / CXM14 (ACxx) / CHM11 / CHM14 (ACxx) / CLM14
- Lustrous Lustron LL613F / LL620F
- Prolight Opto CII series PACC / PACF
- Seoul Semiconductor ZC12 / ZC18
- Sunpu G17
- Tridonic Talexx SLE GEN3 Mini LES-17
- Tridonic Talexx SLE GEN4 & GEN5 15mm
- Vossloh-Schwabe Luga C DMC 114/125/128

BJB Spotlight connectors 47.319.2070



Suitable for the following LED models:
- Lumileds Luxeon K arrays K12 / K16

BJB Spotlight connectors 47.319.2080



Suitable for the following LED models:
- LG Innotek LEMWM18

BJB Spotlight connectors 47.319.2033



Suitable for the following LED models:
- Citizen Citiled CLL042 / CLU044 / CLU046 / CLU048 / CLU730
- Edison EdiPower II & III HM40
- GLBTECH GME2821
- Lextar PB20G01 / PB20U02 / PB30H02 / PB30U03 / PB40H02 / PB40U03
- LG Innotek LEMWM28
- Luminus XNOVA™ CXM22 / CHM22 / CLM22
- Lumileds Luxeon 1211 / 1216
- Lustrous Lustron LL630F / LL630D / LL660D
- Prolight Opto CIII series PACD / PACG
- Seoul Semiconductor ZC25 / ZC40 / ZC60
- Sunpu G7

BJB Spotlight connectors 47.319.2090



Suitable for the following LED models:
- Osram Soleriq E30

BJB Spotlight connectors 47.319.2131



Suitable for the following LED models:
- Cree XLamp CXA1816 / 1820 / 1850, CXB1816 / 1820

BJB Spotlight connectors 47.319.2040



Suitable for the following LED models:
- Bridgelux ES Rectangle
- Prolight Opto BI series PABA

BJB Spotlight connectors 47.319.2141



Suitable for the following LED models:
- Cree XLamp CXA2520 / 2530 / 2540 / 2590, CXB2530 / CXB2540
- Lumens Ergon ERC2530 / 2540



BJB Spotlight connectors **47.319.2151**

Suitable for the following LED models:
- Cree XLamp CXA3050 / 3070, CXB3050 / 3070
- Lumens Ergon ERC3050 / 3070



BJB Spotlight connectors **47.319.2224**

Suitable for the following LED models:
- Bridgelux V series V15 / V18

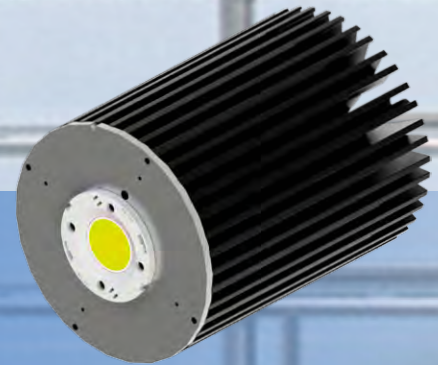


BJB Spotlight connectors **47.319.2170**

Suitable for the following LED models:
- Osram Soleriq S19

BJB LED holders for High Bay COB MechaTronix compatible LED coolers

• CoolBay® Giga-A • CoolBay® Tera-A



Screw fixing - Housing: PBT - Contacts: CuSn - Rating: 3A / 60 VDC



BJB Spotlight connectors **47.319.4160**

Suitable for the following LED models:
- Citizen Citiled CLL052 / CLU054 / CLU056 / CLU058
- Edison EdiPower III HM 120W / 150W
- Seoul Semiconductor ZC100

BJB Zhaga Book 11 mountable LED holders

MechaTronix compatible LED coolers

- LPF4768-ZHP
- LPF6050-ZHC
- LPF6768-ZHP
- ModuLED Pico 4750
- ModuLED Pico 4780
- ModuLED Nano 7050
- ModuLED Nano 7080
- ModuLED Micro 8630
- ModuLED Micro 8650
- ModuLED Micro 8680
- ModuLED Xtra 9950
- ModuLED Xtra 9980
- IceLED Xtra 550
- IceLED Xtra Ultra



Screw fixing - Housing: PBT - Contacts: CuSn - Rating: 3A / 150 VDC

BJB Spotlight connectors 47.319.6060

Suitable for the following LED models:

- Citizen Citiled CLL024 / CLU024 / CLU026 / CLU028 / CLU700
- Edison EdiPower II & III HM05 / HM09 / HM13
- Everlight Xuan1313
- Luminus XNOVA™ CXM-9 (ACxx) / CHM9 (ACxx) / CLM9
- Prolight Opto CI series PACB / PACE
- Seoul Semiconductor ZC6
- Sunpu G16
- Tridonic Talexx SLE GEN4-10 EXC/ADV/R SNC
- Tridonic Talexx SLE GEN5-6, -11 EXC/ADV
- Vossloh-Schwabe Luga C DMC 122

BJB Spotlight connectors 47.319.6180

Suitable for the following LED models:

- Nichia NTCWS024B
- Philips Lumileds Luxeon® 1202s
- Sharp Mini Zenigata

BJB Spotlight connectors 47.319.6190

Suitable for the following LED models:

- Osram Soleriq Soleriq P6

BJB Spotlight connectors 47.319.6101

Suitable for the following LED models:

- Cree XLamp CXA1507 / 1512 / 1520, CXB1507 / 1512

BJB Spotlight connectors 47.319.6200

Suitable for the following LED models:

- Osram Soleriq Soleriq P9

BJB Spotlight connectors 47.319.6111

Suitable for the following LED models:

- Lextar PB15H05 / 15U06 / 20H03 / 30H04
- Osram Soleriq Soleriq S13 / P13

BJB Spotlight connectors 47.319.6214

Suitable for the following LED models:

- Bridgelux V series V10 / V13

BJB Spotlight connectors 47.319.6120

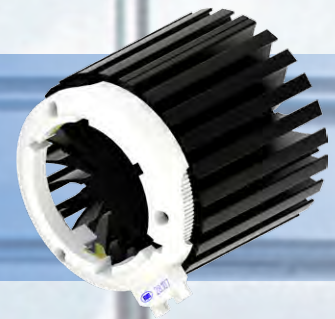
Suitable for the following LED models:

- Cree XLamp CXA1304 / 1310, CXB1304

BJB Zhaga Book 2 & 6 LED holders

MechaTronix compatible LED coolers

- ModuLED Xtra 9950
- IceLED Xtra 550
- ModuLED Xtra 9980
- IceLED Xtra Ultra



BJB Lampholder for LED **28.107.2001**

BJB LED Lampholder for LED light sources PHJ65-d (Megaman, Philips, Tridonic)
Key: PHJ65d-1 for LED light engines 100-120 V AC
Screw fixing - Housing: PBT - Contacts: CuSn



BJB Lampholder for E-Core LED **28.301.1002**

BJB LED GH76p Lampholder for E-Core LED Light Engine from Toshiba
Key: GH76p-2 for LED light engines 220-277 V AC
Screw fixing - Material: PPS/PC



BJB Lampholder for LED **28.107.2002**

BJB LED Lampholder for LED light sources PHJ65-d (Megaman, Philips, Tridonic)
Key: PHJ65d-2 for LED light engines 230-277 V AC
Screw fixing - Housing: PBT - Contacts: CuSn



BJB Lampholder for E-Core LED **28.301.1005**

BJB LED GH76p Lampholder for E-Core LED Light Engine from Toshiba
Key: GH76p-5 for LED light engines 100-277 V AC
Screw fixing - Material: PPS/PC



BJB Lampholder for E-Core LED **28.301.1001**

BJB LED GH76p Lampholder for E-Core LED Light Engine from Toshiba
Key: GH76p-1 for LED light engines 100-120 V AC
Screw fixing - Material: PPS/PC



About BJB

German company BJB has been in the lighting industry for 146 years and in the Taiwan market for 30 years. As the lighting industry transits from fluorescent lamps to LED, BJB is employing past technology advantages to enter the LED lighting industry, and mainly promoting LED connectors and LED lampholders. The company has a strong customer base consisting large international lighting manufacturers, such as Philips, Osram and Toshiba. BJB emphasized it will continue to be the connection to light that leads the industry towards a bright future.

80 years of market experience in conventional lighting lays foundation for entering the LED industry

BJB's past experiences as a manufacturer of lampholders. With the lighting market shifting from fluorescent lamps to LED, BJB entered the LED lighting field in 2007 with a focus on LED connectors. BJB also joined the Zhaga Consortium in 2010. The consortium strives to standardize LED Modules and LED light sources. If more manufacturers use these modules in the future, the unified interface can expand economies of scale and lower costs.

The company is cooperating with leading manufacturers in LED lighting and package technology, such as Citizen, Cree, Edison Opto, Lextar, Lumileds, Osram, Prolight Opto, LG Innotek, Samsung and Toshiba. In LED lighting applications, integration of optical mechanical electric and heat are very important. Therefore, BJB proposes solutions that improve luminaries during collaboration with clients.

As LED lighting applications matures, BJB is also quickly implementing its business strategies in the LED lighting industry. Having been in the conventional lighting market for 70-80 years, BJB's greatest advantage has been its deep penetration in the conventional lighting industry, and providing services to LED clients from a lighting industry perspective. With its headquarters based in Germany, it has benefited from geographic location and developed a close partnership with global lighting giants in the past.

BJB featured LED connector continues to be "bridge of light"

The LED connector that BJB is highlighting in the lighting market can be easily installed using screw fixing and standard push wire technology that makes soldering obsolete. The LED connectors and LED lampholders highlighted by BJB offer features including flexibility, economies of scale, standardized reflector interfaces, and are future-proofed. Hence the luminaire manufacturer benefits from reduced assembly and system costs.

In addition, BJB pointed out current conventional lighting and lighting sources have been around for several decades, and for LED lighting sources to enter this market it will also need to develop standardized connecting methods. In order to optimize luminaire production and deployment of LED Lighting in the market, it will also need standardized LED Light Source that are exchangeable.

Automation for the lighting industry

For more than 15 years BJB offers robots to wire and test luminaires automatically. With more than 160 machines in the market BJB has always designed its components in a way that they can also be wired and processed fully automated. The same design requirements for automated production BJB also considers for its LED components and is currently the only company to offer COB connectors, SMD terminal blocks and LED Lampholders that can be wired automatically.

For more information on BJB please visit www.bjb.com

About MechaTronix

MechaTronix was founded as a creative designer & manufacturer of high end mechanical plastic & metal parts. With its Asia-based headquarters in Kaohsiung Taiwan, MechaTronix became a powerhouse at designing and manufacturing heat sinks and thermal solutions for OEM and LED lighting applications. Strategic partnerships with major LED manufacturers and sharing our thermal knowledge with their luminaire designers are our core missions. Simple passive cooling, advanced heat pipe technology or active cooling solutions? MechaTronix offers of the shelf and tailored solutions to its worldwide professional customer base. For more information about the company, please visit www.mechatronix-asia.com

