



# LUMINUS LED COOLING

## XNova™ series LED Arrays

CLM-9, CXM-9, CHM-9, CXM-11, CHM-11, CLM-14, CXM-14, CHM-14,  
CVM-14, CXM-18, CVM-18, CLM-22, CXM-22, CHM-22, CXM-32, CVM-32

- Validated Thermal Designs
- Adaptable to your Needs
- Functional & Aesthetic





## Mastering LED Cooling

With the evolution of LED lighting over the last years, the demand for professional thermal solutions has grown exponentially. And now that we no longer remain in the realm of low power LED's, thermal management becomes a critical factor within LED fixtures. To that end, MechaTronix has developed several series of pin-fin and star heat sinks, manufactured through die casting, forging or extrusion. This has resulted in a comprehensive range of more than 400 off-the-shelf available LED coolers, for passive or active heat dissipation.

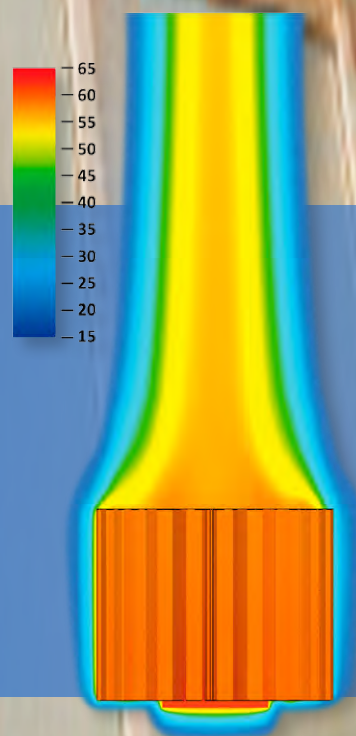
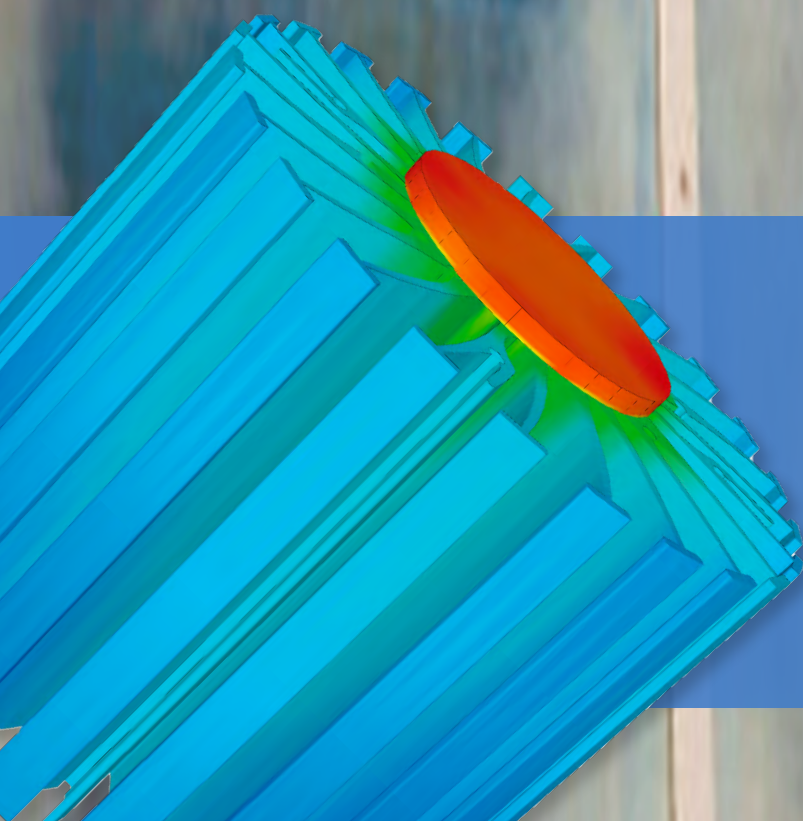
After initial reservations concerning active LED coolers, specialists have found that there really is no better option, when closing in on the 8000 lumen mark. Admittedly, the fan's lifespan becomes somewhat of a focal point in the application of an active LED cooler, but given that the lifespan of the LED engine itself dramatically decreases at high temperatures, the lifespan of the fan looks rather favourable all of a sudden.

MechaTronix' ground breaking ModuLED coolers and its actively cooled sibling IceLED have garnered a lot of attention and positive reviews in the LED market. ModuLED and IceLED are just precursors of a complete range of dedicated and highly effective LED coolers for professional deployment in spotlights, downlights, high bays and a further score of architectural and utility LED applications.

Both ModuLED and IceLED, as well as their upcoming descendants are Zhaga-ready and have a matrix of mounting holes that allows for very easy attachment of a great number of various Luminus LED arrays. Simply apply a thermal interface of your choice, put the LED engine in place and fasten with self-tapping screws and you are good to go! No drilling, customisation or special mounting brackets are needed.

Thanks to an extremely thorough thermal verification of all heat sink lines, MechaTronix provides total thermal disclosure for each model, coupled with all Luminus XNova LED Arrays and engines. All thermal data is available in the product specifications, that come with every MechaTronix heat sink. In this way, engineers save time and effort during the design stage of their LED fixture and will significantly shorten their time to market.

## OUR PROCESS STARTS WITH LISTENING



# LUMINUS LED COOLING

## XNova™ series LED Arrays

CLM-9, CXM-9, CHM-9, CXM-11, CHM-11, CLM-14, CXM-14, CHM-14,  
CVM-14, CXM-18, CVM-18, CLM-22, CXM-22, CHM-22, CXM-32, CVM-32

### LPF3550-ZHC



Luminus LED Pin Fin cooler  
ø35mm - h50mm - Rth 7.41°C/W  
Cooling performance 700 - 1,300 lm

| Direct mount | Zhaga holder | Luminus XNova LED array |
|--------------|--------------|-------------------------|
| ✓            | ✓            | CLM-9 (AC), CXM-9 (AC)  |

### LPF4768-ZHP



Luminus LED Pin Fin cooler  
ø47mm - h68mm - Rth 3.9°C/W  
Cooling performance 1,300 - 2,500 lm

| Direct mount | Zhaga holder | Luminus XNova LED array            |
|--------------|--------------|------------------------------------|
|              | ✓            | CLM-9 (AC), CXM-9 (AC), CHM-9 (AC) |
|              | ✓            | CXM-11 (AC)                        |
|              | ✓            | CLM-14 (AC), CXM-14 (AC)           |

### LPF6050-ZHC



Luminus LED Pin Fin cooler  
ø60mm - h50mm - Rth 4.0°C/W  
Cooling performance 1,200 - 2,300 lm

| Direct mount | Zhaga holder | Luminus XNova LED array               |
|--------------|--------------|---------------------------------------|
| ✓            | ✓            | CLM-9 (AC), CXM-9 (AC), CHM-9 (AC)    |
|              | ✓            | CXM-11 (AC)                           |
|              | ✓            | CLM-14 (AC), CXM-14 (AC), CHM-14 (AC) |

### LPF6768-ZHP



Luminus LED Pin Fin cooler  
ø67mm - h68mm - Rth 2.1°C/W  
Cooling performance 2,300 - 4,600 lm

| Direct mount | Zhaga holder | Luminus XNova LED array               |
|--------------|--------------|---------------------------------------|
|              | ✓            | CLM-9 (AC), CXM-9 (AC), CHM-9 (AC)    |
|              | ✓            | CXM-11 (AC), CHM-11-XH00              |
|              | ✓            | CLM-14 (AC), CXM-14 (AC), CHM-14 (AC) |
|              | ✓            | CXM-18                                |

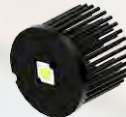
### LPF8050-ZHC



Luminus LED Pin Fin cooler  
ø80mm - h50mm - Rth 2.34°C/W  
Cooling performance 2,000 - 4,000 lm

| Direct mount | Zhaga holder | Luminus XNova LED array               |
|--------------|--------------|---------------------------------------|
| ✓            | ✓            | CXM-11 (AC), CHM-11-XH00              |
| ✓            | ✓            | CLM-14 (AC), CXM-14 (AC), CHM-14 (AC) |
|              | ✓            | CXM-18                                |

### LPF8668-ZHC



Luminus LED Pin Fin cooler  
ø86mm - h68mm - Rth 1.46°C/W  
Cooling performance 3,300 - 6,500 lm

| Direct mount | Zhaga holder | Luminus XNova LED array               |
|--------------|--------------|---------------------------------------|
| ✓            | ✓            | CXM-11 (AC), CHM-11-XH00              |
| ✓            | ✓            | CLM-14 (AC), CXM-14 (AC), CHM-14 (AC) |
|              | ✓            | , CVM-14                              |
| ✓            | ✓            | CXM-18                                |
|              | ✓            | CLM-22                                |

### LPF11180-ZHE



Luminus LED Pin Fin cooler  
ø111mm - h80mm - Rth 1.07°C/W  
Cooling performance 4,800 - 9,600 lm

| Direct mount | Zhaga holder | Luminus XNova LED array               |
|--------------|--------------|---------------------------------------|
|              | ✓            | CXM-11 (AC), CHM-11-XH00              |
|              | ✓            | CLM-14 (AC), CXM-14 (AC), CHM-14 (AC) |
|              |              | , CVM-14                              |
|              | ✓            | CXM-18, CVM-18                        |
|              | ✓            | CLM-22, CXM-22                        |

### CoolStar® White 4740



Luminus Designer LED Star cooler  
ø47mm - h40mm - Rth 5°C/W  
Cooling performance 1,000 - 2,000 lm

| Direct mount | Zhaga holder | Luminus XNova LED array |
|--------------|--------------|-------------------------|
| ✓            | ✓            | CLM-9 (AC), CXM-9 (AC)  |

### CoolStar® White 4760



Luminus Designer LED Star cooler  
ø47mm - h60mm - Rth 4.17°C/W  
Cooling performance 1,200 - 2,400 lm

| Direct mount | Zhaga holder | Luminus XNova LED array            |
|--------------|--------------|------------------------------------|
| ✓            | ✓            | CLM-9 (AC), CXM-9 (AC), CHM-9 (AC) |

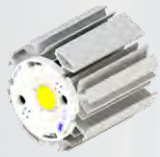
### CoolStar® White 6730



Luminus Designer LED Star cooler  
ø67mm - h30mm - Rth 3.13°C/W  
Cooling performance 1,600 - 3,100 lm

| Direct mount | Zhaga holder | Luminus XNova LED array            |
|--------------|--------------|------------------------------------|
| ✓            |              | CLM-9 (AC), CXM-9 (AC), CHM-9 (AC) |
| ✓            |              | CXM-11 (AC)                        |
| ✓            | ✓            | CLM-14 (AC), CXM-14 (AC)           |





### CoolStar® White 6760

Luminus Designer LED Star cooler  
ø67mm - h60mm - Rth 2.27°C/W  
Cooling performance 2,100 - 4,200 lm

| Direct mount | Zhaga holder | Luminus XNova LED array               |
|--------------|--------------|---------------------------------------|
| ✓            |              | CLM-9 (AC), CXM-9 (AC), CHM-9 (AC)    |
| ✓            | ✓            | CXM-11 (AC)                           |
| ✓            | ✓            | CLM-14 (AC), CXM-14 (AC), CHM-14 (AC) |



### CoolStar® White 8630

Luminus Designer LED Star cooler  
ø86mm - h30mm - Rth 2.08°C/W  
Cooling performance 2,300 - 4,600 lm

| Direct mount | Zhaga holder | Luminus XNova LED array               |
|--------------|--------------|---------------------------------------|
| ✓            |              | CXM-11 (AC)                           |
| ✓            | ✓            | CLM-14 (AC), CXM-14 (AC), CHM-14 (AC) |



### CoolStar® White 8660

Luminus Designer LED Star cooler  
ø86mm - h60mm - Rth 1.56°C/W  
Cooling performance 3,100 - 6,100 lm

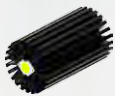
| Direct mount | Zhaga holder | Luminus XNova LED array |
|--------------|--------------|-------------------------|
| ✓            | ✓            | CHM-11-XH00             |
| ✓            | ✓            | CHM-14 (AC)             |
|              | ✓            | CLM-22, CXM-22          |



### ModuLED Pico 4750

Luminus Modular LED Star cooler  
ø47mm - h50mm - Rth 5.3°C/W  
Cooling performance 900 - 1,800 lm

| Direct mount | Zhaga holder | Luminus XNova LED array            |
|--------------|--------------|------------------------------------|
| ✓            | ✓            | CLM-9 (AC), CXM-9 (AC), CHM-9 (AC) |



### ModuLED Pico 4780

Luminus Modular LED Star cooler  
ø47mm - h80mm - Rth 4.2°C/W  
Cooling performance 1,200 - 2,300 lm

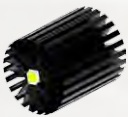
| Direct mount | Zhaga holder | Luminus XNova LED array               |
|--------------|--------------|---------------------------------------|
| ✓            | ✓            | CLM-9 (AC), CXM-9 (AC), CHM-9 (AC)    |
| ✓            | ✓            | CXM-11 (AC)                           |
| ✓            | ✓            | CLM-14 (AC), CXM-14 (AC), CHM-14 (AC) |



### ModuLED Nano 7050

Luminus Modular LED Star cooler  
ø70mm - h50mm - Rth 2.2°C/W  
Cooling performance 2,200 - 4,300 lm

| Direct mount | Zhaga holder | Luminus XNova LED array               |
|--------------|--------------|---------------------------------------|
| ✓            | ✓            | CLM-9 (AC), CXM-9 (AC), CHM-9 (AC)    |
| ✓            | ✓            | CXM-11 (AC), CHM-11-XH00              |
| ✓            | ✓            | CLM-14 (AC), CXM-14 (AC), CHM-14 (AC) |
|              | ✓            | CXM-18                                |



### ModuLED Nano 7080

Luminus Modular LED Star cooler  
ø70mm - h80mm - Rth 1.8°C/W  
Cooling performance 2,700 - 5,300 lm

| Direct mount | Zhaga holder | Luminus XNova LED array               |
|--------------|--------------|---------------------------------------|
| ✓            | ✓            | CLM-9 (AC), CXM-9 (AC), CHM-9 (AC)    |
| ✓            | ✓            | CXM-11 (AC), CHM-11-XH00              |
| ✓            | ✓            | CLM-14 (AC), CXM-14 (AC), CHM-14 (AC) |
|              | ✓            | , CVM-14                              |
|              | ✓            | CXM-18                                |
|              | ✓            | CLM-22                                |



### ModuLED Micro 8650

Luminus Modular LED Star cooler  
ø86mm - h50mm - Rth 1.5°C/W  
Cooling performance 3,200 - 6,400 lm

| Direct mount | Zhaga holder | Luminus XNova LED array               |
|--------------|--------------|---------------------------------------|
| ✓            | ✓            | CHM-9 (AC)                            |
| ✓            | ✓            | CXM-11 (AC), CHM-11-XH00              |
| ✓            | ✓            | CLM-14 (AC), CXM-14 (AC), CHM-14 (AC) |
|              | ✓            | , CVM-14                              |
|              | ✓            | CXM-18                                |
|              | ✓            | CLM-22                                |



### ModuLED Micro 8680

Luminus Modular LED Star cooler  
ø86mm - h80mm - Rth 1.2°C/W  
Cooling performance 4,000 - 8,000 lm

| Direct mount | Zhaga holder | Luminus XNova LED array               |
|--------------|--------------|---------------------------------------|
| ✓            | ✓            | CXM-11 (AC), CHM-11-XH00              |
| ✓            | ✓            | CLM-14 (AC), CXM-14 (AC), CHM-14 (AC) |
|              | ✓            | , CVM-14                              |
|              | ✓            | CXM-18, CVM-18                        |
|              | ✓            | CLM-22, CXM-22                        |



### ModuLED 9950

Luminus Modular LED Star cooler  
ø99mm - h50mm - Rth 1.34°C/W  
Cooling performance 3,600 - 7,200 lm

| Direct mount | Zhaga holder | Luminus XNova LED array               |
|--------------|--------------|---------------------------------------|
|              | ✓            | CXM-11 (AC), CHM-11-XH00              |
|              | ✓            | CLM-14 (AC), CXM-14 (AC), CHM-14 (AC) |
|              | ✓            | , CVM-14                              |
|              | ✓            | CXM-18                                |
| ✓            | ✓            | CLM-22, CXM-22                        |

### ModuLED 9980



Luminus Modular LED Star cooler  
 $\varnothing 99\text{mm}$  - h80mm - Rth 1.02°C/W  
 Cooling performance 4,700 - 9,400 lm

| Direct mount                        | Zhaga holder                        | Luminus XNova LED array                       |
|-------------------------------------|-------------------------------------|---|
|                                     | <input checked="" type="checkbox"/> | CXM-11 (AC), CHM-11-XH00                      |
|                                     | <input checked="" type="checkbox"/> | CLM-14 (AC), CXM-14 (AC), CHM-14 (AC), CVM-14 |
| <input checked="" type="checkbox"/> | <input checked="" type="checkbox"/> | CXM-18, CVM-18                                |
|                                     | <input checked="" type="checkbox"/> | CLM-22, CXM-22                                |

### ModuLED Mega 13420



Luminus Modular LED Star cooler  
 $\varnothing 134\text{mm}$  - h20mm - Rth 1.32°C/W  
 Cooling performance 3,700 - 7,300 lm

| Direct mount                        | Zhaga holder                        | Luminus XNova LED array |
|-------------------------------------|-------------------------------------|-------------------------|
|                                     | <input checked="" type="checkbox"/> | CHM-11-XH00             |
|                                     | <input checked="" type="checkbox"/> | CHM-14 (AC), CVM-14     |
| <input checked="" type="checkbox"/> | <input checked="" type="checkbox"/> | CXM-18, CVM-18          |
|                                     | <input checked="" type="checkbox"/> | CLM-22, CXM-22          |

### ModuLED Mega 13450-HBG



Luminus High Bay LED cooler with direct mounting holes for Mean Well HBG series driver  
 $\varnothing 134\text{mm}$  - h50mm - Rth 0.88°C/W  
 Cooling performance 5,500 - 11,000 lm

| Direct mount                        | Zhaga holder                        | Luminus XNova LED array |
|-------------------------------------|-------------------------------------|-------------------------|
|                                     | <input checked="" type="checkbox"/> | CVM-14                  |
|                                     | <input checked="" type="checkbox"/> | CVM-18                  |
| <input checked="" type="checkbox"/> | <input checked="" type="checkbox"/> | CLM-22, CXM-22, CHM-22  |

### ModuLED Mega 134100-HBG



Luminus High Bay LED cooler with direct mounting holes for Mean Well HBG series driver  
 $\varnothing 134\text{mm}$  - h100mm - Rth 0.67°C/W  
 Cooling performance 7,200 - 14,300 lm

| Direct mount                        | Zhaga holder                        | Luminus XNova LED array |
|-------------------------------------|-------------------------------------|-------------------------|
|                                     | <input checked="" type="checkbox"/> | CVM-18                  |
| <input checked="" type="checkbox"/> | <input checked="" type="checkbox"/> | CLM-22, CXM-22, CHM-22  |

### ModuLED Giga 15220



Luminus Modular LED Star cooler  
 $\varnothing 152\text{mm}$  - h20mm - Rth 1.13°C/W  
 Cooling performance 4,300 - 8,500 lm

| Direct mount                        | Zhaga holder                        | Luminus XNova LED array |
|-------------------------------------|-------------------------------------|-------------------------|
|                                     | <input checked="" type="checkbox"/> | CVM-14                  |
|                                     | <input checked="" type="checkbox"/> | CVM-18                  |
| <input checked="" type="checkbox"/> | <input checked="" type="checkbox"/> | CLM-22, CXM-22, CHM-22  |

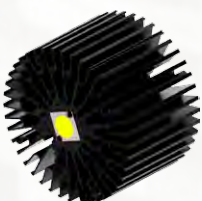
### ModuLED Giga 15250



Luminus Modular LED Star cooler  
 $\varnothing 152\text{mm}$  - h50mm - Rth 0.7°C/W  
 Cooling performance 6,800 - 13,500 lm

| Direct mount                        | Zhaga holder                        | Luminus XNova LED array |
|-------------------------------------|-------------------------------------|-------------------------|
|                                     | <input checked="" type="checkbox"/> | CVM-14                  |
| <input checked="" type="checkbox"/> | <input checked="" type="checkbox"/> | CLM-22, CXM-22, CHM-22  |

### ModuLED Giga 152100-HBG



Luminus High Bay LED cooler with direct mounting holes for Mean Well HBG series driver  
 $\varnothing 152\text{mm}$  - h100mm - Rth 0.52°C/W  
 Cooling performance 9,000 - 18,000 lm

| Direct mount                        | Zhaga holder                        | Luminus XNova LED array |
|-------------------------------------|-------------------------------------|-------------------------|
| <input checked="" type="checkbox"/> | <input checked="" type="checkbox"/> | CLM-22, CXM-22, CHM-22  |

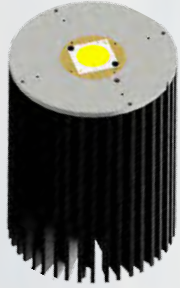
### ModuLED Giga 152150-HBG



Luminus High Bay LED cooler with direct mounting holes for Mean Well HBG series driver  
 $\varnothing 152\text{mm}$  - h150mm - Rth 0.46°C/W  
 Cooling performance 10,500 - 21,000 lm

| Direct mount                        | Zhaga holder                        | Luminus XNova LED array |
|-------------------------------------|-------------------------------------|-------------------------|
| <input checked="" type="checkbox"/> | <input checked="" type="checkbox"/> | CLM-22, CXM-22, CHM-22  |
|                                     | <input checked="" type="checkbox"/> | CXM-32                  |





### CoolBay® Giga-A

Luminus High Bay LED cooler with CoolTube® heat tube and direct mounting holes for Mean Well HBG series driver  
ø152mm - h200mm - Rth 0.34°C/W  
Cooling performance 14,500 - 29,000 lm

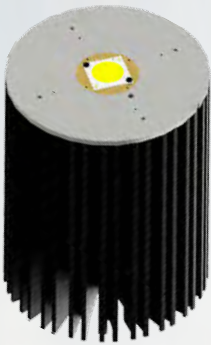
| Direct mount                        | With holder                         | Luminus XNova LED array |
|-------------------------------------|-------------------------------------|-------------------------|
| <input checked="" type="checkbox"/> | <input checked="" type="checkbox"/> | CXM-32                  |



### CoolBay® Giga-B

Luminus High Bay LED cooler with CoolTube® heat tube and direct mounting holes for Mean Well HBG series driver  
ø152mm - h200mm - Rth 0.34°C/W  
Cooling performance 14,500 - 29,000 lm

| Direct mount | With holder                         | Luminus XNova LED array |
|--------------|-------------------------------------|-------------------------|
|              | <input checked="" type="checkbox"/> | CXM-32                  |



### CoolBay® Tera-A

Luminus High Bay LED cooler with CoolTube® heat tube and direct mounting holes for Mean Well HBG series driver  
ø192mm - h250mm - Rth 0.22°C/W  
Cooling performance 22,000 - 44,000 lm

| Direct mount                        | With holder                         | Luminus XNova LED array |
|-------------------------------------|-------------------------------------|-------------------------|
| <input checked="" type="checkbox"/> | <input checked="" type="checkbox"/> | CXM-32, CVM-32          |



### CoolBay® Tera-B

Luminus High Bay LED cooler with CoolTube® heat tube and direct mounting holes for Mean Well HBG series driver  
ø192mm - h250mm - Rth 0.22°C/W  
Cooling performance 22,000 - 44,000 lm

| Direct mount | With holder                         | Luminus XNova LED array |
|--------------|-------------------------------------|-------------------------|
|              | <input checked="" type="checkbox"/> | CXM-32, CVM-32          |



### CoolBlock® SQ-01 2x2MX

Square Pin Fin LED Cooler for 2x2MX platform. Accommodating LED boards with 4 LEDs of Luminus CHM-9 (18V), GEN3 CXM-9 (18V) COB by using 2x2MX Bender+Wirth holder and Ledil Strada 2x2MX lenses for IP67 waterproof with just a few screws

W96mm - L96mm - H61.5mm  
Thermal resistance Rth 1.45°C/W  
Cooling performance 3,300 - 6,500 lm  
Black electro-coating



### IceLED 550

Luminus Modular Active LED cooler  
ø99mm - h55mm - Rth 0.46°C/W  
Cooling performance 10,500 - 21,000 lm

| Direct mount                        | Zhaga holder                        | Luminus XNova LED array          |
|-------------------------------------|-------------------------------------|----------------------------------|
| <input checked="" type="checkbox"/> | <input checked="" type="checkbox"/> | CVM-14<br>CLM-22, CXM-22, CHM-22 |



### IceLED Ultra

Luminus Modular Active LED cooler  
ø99mm - h75mm - Rth 0.25°C/W  
Cooling performance 19,000 - 38,000 lm

| Direct mount                        | Zhaga holder                        | Luminus XNova LED array |
|-------------------------------------|-------------------------------------|-------------------------|
| <input checked="" type="checkbox"/> | <input checked="" type="checkbox"/> | CLM-22, CXM-22, CHM-22  |



Your local distributor:

OUR PROCESS STARTS WITH LISTENING 



Ver 8.0

No.818, Dashun 2nd Rd., Sanmin Dist.  
Tel: +886-7-3815892  
led@mechatronix-asia.com

Kaohsiung City 80787 Taiwan  
Fax: +886-7-3839293  
www.led-heatsink.com