



## PROLIGHT OPTO LED COOLING

### For COB LED modules

CE series PACE-7 / 14 / 21 / 28

CF series PACF-57 and CG series PACG-110

- Validated Thermal Designs
- Adaptable to your Needs
- Functional & Aesthetic





## Mastering LED Cooling

With the evolution of LED lighting over the last years, the demand for professional thermal solutions has grown exponentially. And now that we no longer remain in the realm of low power LED's, thermal management becomes a critical factor within LED fixtures. To that end, MechaTronix has developed several series of pin-fin and star heat sinks, manufactured through die casting, forging or extrusion. This has resulted in a comprehensive range of more than 400 off-the-shelf available LED coolers, for passive or active heat dissipation.

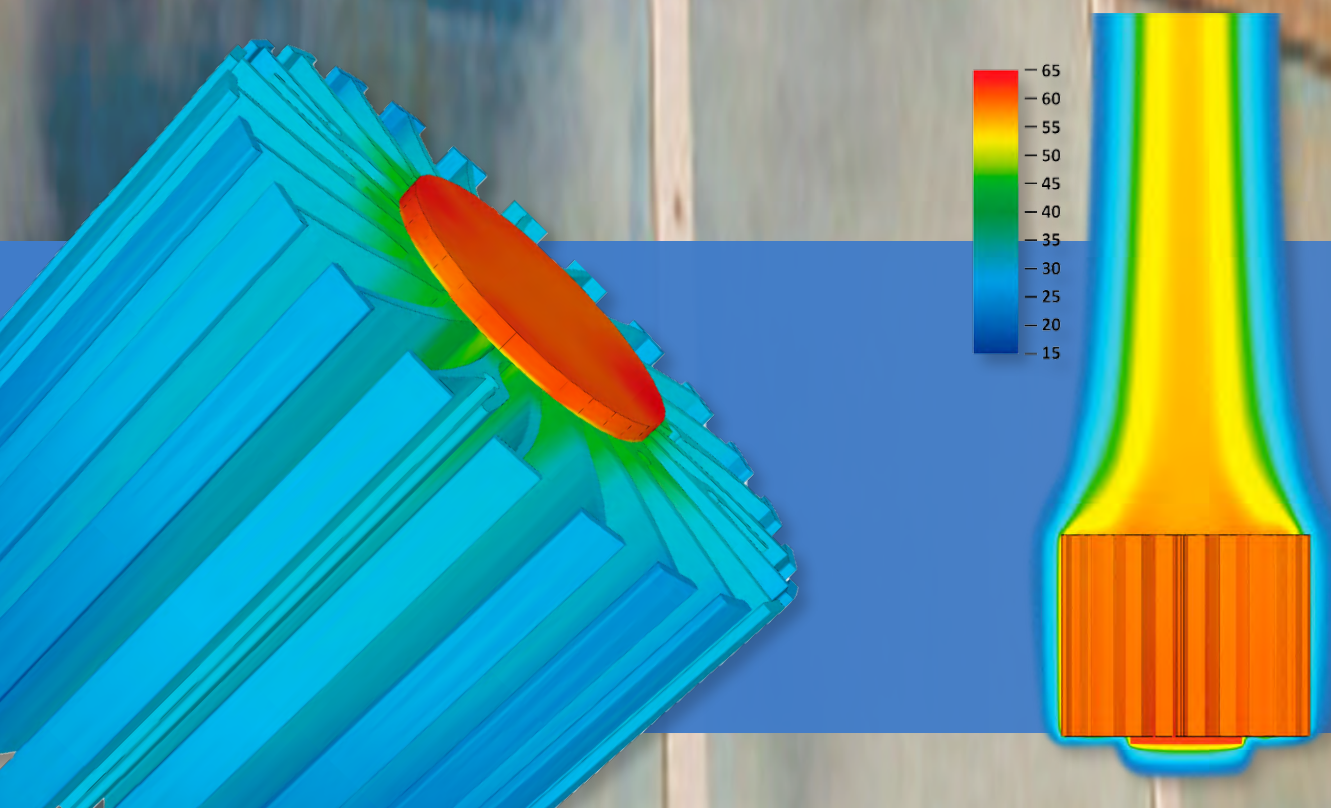
After initial reservations concerning active LED coolers, specialists have found that there really is no better option, when closing in on the 8000 lumen mark. Admittedly, the fan's lifespan becomes somewhat of a focal point in the application of an active LED cooler, but given that the lifespan of the LED engine itself dramatically decreases at high temperatures, the lifespan of the fan looks rather favourable all of a sudden.

MechaTronix' ground breaking ModuLED coolers and its actively cooled sibling IceLED have garnered a lot of attention and positive reviews in the LED market. ModuLED and IceLED are just precursors of a complete range of dedicated and highly effective LED coolers for professional deployment in spotlights, downlights, high bays and a further score of architectural and utility LED applications.

Both ModuLED and IceLED, as well as their upcoming descendants are Zhaga-ready and have a matrix of mounting holes that allows for very easy attachment of a great number of various Prolight Opto LED modules. Simply apply a thermal interface of your choice, put the LED engine in place and fasten with self-tapping screws and you are good to go! No drilling, customisation or special mounting brackets are needed.

Thanks to an extremely thorough thermal verification of all heat sink lines, MechaTronix provides total thermal disclosure for each model, coupled with all Prolight Opto COB's and engines. All thermal data is available in the product specifications, that come with every MechaTronix heat sink. In this way, engineers save time and effort during the design stage of their LED fixture and will significantly shorten their time to market.

## OUR PROCESS STARTS WITH LISTENING



# PROLIGHT OPTO LED COOLING

## For COB LED modules

CE series PACE-7 / 14 / 21 / 28

CF series PACF-57 and CG series PACG-110

### LPF3550-ZHC



Prolight Opto LED Pin Fin cooler  
ø35mm - h50mm - Rth 7.41°C/W  
Cooling performance 700 - 1,300 lm

Direct mount	Zhaga holder	Prolight Opto LED COB
<input checked="" type="checkbox"/>	<input checked="" type="checkbox"/>	PACE - 7

### LPF4768-ZHP



Prolight Opto LED Pin Fin cooler  
ø47mm - h68mm - Rth 3.9°C/W  
Cooling performance 1,300 - 2,500 lm

Direct mount	Zhaga holder	Prolight Opto LED COB
	<input checked="" type="checkbox"/>	PACE - 7 / 14

### LPF6050-ZHC



Prolight Opto LED Pin Fin cooler  
ø60mm - h50mm - Rth 4.0°C/W  
Cooling performance 1,200 - 2,300 lm

Direct mount	Zhaga holder	Prolight Opto LED COB
<input checked="" type="checkbox"/>	<input checked="" type="checkbox"/>	PACE - 7 / 14 / 21

### LPF6768-ZHP



Prolight Opto LED Pin Fin cooler  
ø67mm - h68mm - Rth 2.1°C/W  
Cooling performance 2,300 - 4,600 lm

Direct mount	Zhaga holder	Prolight Opto LED COB
	<input checked="" type="checkbox"/>	PACE - 7 / 14 / 21 / 28
	<input checked="" type="checkbox"/>	PACF - 57

### LPF8050-ZHC



Prolight Opto LED Pin Fin cooler  
ø80mm - h50mm - Rth 2.34°C/W  
Cooling performance 2,000 - 4,000 lm

Direct mount	Zhaga holder	Prolight Opto LED COB
<input checked="" type="checkbox"/>	<input checked="" type="checkbox"/>	PACF - 57

### LPF8668-ZHC



Prolight Opto LED Pin Fin cooler  
ø86mm - h68mm - Rth 1.46°C/W  
Cooling performance 3,300 - 6,500 lm

Direct mount	Zhaga holder	Prolight Opto LED COB
<input checked="" type="checkbox"/>	<input checked="" type="checkbox"/>	PACF - 57
<input checked="" type="checkbox"/>	<input checked="" type="checkbox"/>	PACG - 110

### LPF11180-ZHE



Prolight Opto LED Pin Fin cooler  
ø111mm - h80mm - Rth 1.07°C/W  
Cooling performance 4,800 - 9,600 lm

Direct mount	Zhaga holder	Prolight Opto LED COB
	<input checked="" type="checkbox"/>	PACF - 57
	<input checked="" type="checkbox"/>	PACG - 110

### CoolStar® White 4740



Prolight Opto Designer LED Star cooler  
ø47mm - h40mm - Rth 5°C/W  
Cooling performance 1,000 - 2,000 lm

Direct mount	Zhaga holder	Prolight Opto LED COB
<input checked="" type="checkbox"/>	<input checked="" type="checkbox"/>	PACE - 7

### CoolStar® White 4760



Prolight Opto Designer LED Star cooler  
ø47mm - h60mm - Rth 4.17°C/W  
Cooling performance 1,200 - 2,400 lm

Direct mount	Zhaga holder	Prolight Opto LED COB
<input checked="" type="checkbox"/>	<input checked="" type="checkbox"/>	PACE - 7 / 14

### CoolStar® White 6730



Prolight Opto Designer LED Star cooler  
ø67mm - h30mm - Rth 3.13°C/W  
Cooling performance 1,600 - 3,100 lm

Direct mount	Zhaga holder	Prolight Opto LED COB
<input checked="" type="checkbox"/>		PACE - 14 / 21





### CoolStar® White 6760

Prolight Opto Designer LED Star cooler  
ø67mm - h60mm - Rth 2.27°C/W  
Cooling performance 2,100 - 4,200 lm

Direct mount	Zhaga holder	Prolight Opto LED COB
✓		PACE - 14 / 21 / 28
✓	✓	PACF - 57



### CoolStar® White 8630

Prolight Opto Designer LED Star cooler  
ø86mm - h30mm - Rth 2.08°C/W  
Cooling performance 2,300 - 4,600 lm

Direct mount	Zhaga holder	Prolight Opto LED COB
✓		PACE - 28
✓	✓	PACF - 57



### CoolStar® White 8660

Prolight Opto Designer LED Star cooler  
ø86mm - h60mm - Rth 1.56°C/W  
Cooling performance 3,100 - 6,100 lm

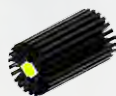
Direct mount	Zhaga holder	Prolight Opto LED COB
✓		PACE - 28
✓	✓	PACF - 57



### ModuLED Pico 4750

Prolight Opto Modular LED Star cooler  
ø47mm - h50mm - Rth 5.3°C/W  
Cooling performance 900 - 1,800 lm

Direct mount	Zhaga holder	Prolight Opto LED COB
✓		PACE - 7 / 14
✓	✓	



### ModuLED Pico 4780

Prolight Opto Modular LED Star cooler  
ø47mm - h80mm - Rth 4.2°C/W  
Cooling performance 1,200 - 2,300 lm

Direct mount	Zhaga holder	Prolight Opto LED COB
✓		PACE - 7 / 14 / 21
✓	✓	



### ModuLED Nano 7050

Prolight Opto Modular LED Star cooler  
ø70mm - h50mm - Rth 2.2°C/W  
Cooling performance 2,200 - 4,300 lm

Direct mount	Zhaga holder	Prolight Opto LED COB
✓		PACE - 7 / 14 / 21 / 28
✓	✓	PACF - 57



### ModuLED Nano 7080

Prolight Opto Modular LED Star cooler  
ø70mm - h80mm - Rth 1.8°C/W  
Cooling performance 2,700 - 5,300 lm

Direct mount	Zhaga holder	Prolight Opto LED COB
✓		PACE - 14 / 21 / 28
✓	✓	PACF - 57



### ModuLED Micro 8650

Prolight Opto Modular LED Star cooler  
ø86mm - h50mm - Rth 1.5°C/W  
Cooling performance 3,200 - 6,400 lm

Direct mount	Zhaga holder	Prolight Opto LED COB
✓		PACE - 14 / 21 / 28
✓	✓	PACF - 57



### ModuLED Micro 8680

Prolight Opto Modular LED Star cooler  
ø86mm - h80mm - Rth 1.2°C/W  
Cooling performance 4,000 - 8,000 lm

Direct mount	Zhaga holder	Prolight Opto LED COB
✓		PACE - 28
✓	✓	PACF - 57
	✓	PACG - 110



### ModuLED 9950

Prolight Opto Modular LED Star cooler  
ø99mm - h50mm - Rth 1.34°C/W  
Cooling performance 3,600 - 7,200 lm

Direct mount	Zhaga holder	Prolight Opto LED COB
✓		PACF - 57
✓	✓	

### ModuLED 9980



Prolight Opto Modular LED Star cooler  
 $\varnothing 99\text{mm}$  -  $h 80\text{mm}$  -  $R_{th} 1.02^{\circ}\text{C/W}$   
 Cooling performance 4,700 - 9,400 lm

Direct mount	Zhaga holder	Prolight Opto LED COB
<input checked="" type="checkbox"/>	<input checked="" type="checkbox"/>	PACF - 57
<input checked="" type="checkbox"/>	<input checked="" type="checkbox"/>	PACG - 110

### ModuLED Mega 13420



Prolight Opto Modular LED Star cooler  
 $\varnothing 134\text{mm}$  -  $h 20\text{mm}$  -  $R_{th} 1.32^{\circ}\text{C/W}$   
 Cooling performance 3,700 - 7,300 lm

Direct mount	Zhaga holder	Prolight Opto LED COB
<input checked="" type="checkbox"/>	<input checked="" type="checkbox"/>	PACF - 57
<input checked="" type="checkbox"/>	<input checked="" type="checkbox"/>	PACG - 110

### ModuLED Mega 13450-HBG



Prolight Opto High Bay LED cooler with  
 direct mounting holes for Mean Well  
 HBG series driver  
 $\varnothing 134\text{mm}$  -  $h 50\text{mm}$  -  $R_{th} 0.88^{\circ}\text{C/W}$   
 Cooling performance 5,500 - 11,000 lm

Direct mount	Zhaga holder	Prolight Opto LED COB
<input checked="" type="checkbox"/>	<input checked="" type="checkbox"/>	PACF - 57
<input checked="" type="checkbox"/>	<input checked="" type="checkbox"/>	PACG - 110

### ModuLED Mega 134100-HBG



Prolight Opto High Bay LED cooler with  
 direct mounting holes for Mean Well  
 HBG series driver  
 $\varnothing 134\text{mm}$  -  $h 100\text{mm}$  -  $R_{th} 0.67^{\circ}\text{C/W}$   
 Cooling performance 7,200 - 14,300 lm

Direct mount	Zhaga holder	Prolight Opto LED COB
<input checked="" type="checkbox"/>	<input checked="" type="checkbox"/>	PACF - 57
<input checked="" type="checkbox"/>	<input checked="" type="checkbox"/>	PACG - 110

### ModuLED Giga 15220



Prolight Opto Modular LED Star cooler  
 $\varnothing 152\text{mm}$  -  $h 20\text{mm}$  -  $R_{th} 1.13^{\circ}\text{C/W}$   
 Cooling performance 4,300 - 8,500 lm

Direct mount	Zhaga holder	Prolight Opto LED COB
<input checked="" type="checkbox"/>	<input checked="" type="checkbox"/>	PACF - 57
	<input checked="" type="checkbox"/>	PACG - 110

### ModuLED Giga 15250



Prolight Opto Modular LED Star cooler  
 $\varnothing 152\text{mm}$  -  $h 50\text{mm}$  -  $R_{th} 0.7^{\circ}\text{C/W}$   
 Cooling performance 6,800 - 13,500 lm

Direct mount	Zhaga holder	Prolight Opto LED COB
<input checked="" type="checkbox"/>	<input checked="" type="checkbox"/>	PACF - 57
	<input checked="" type="checkbox"/>	PACG - 110

### ModuLED Giga 152100-HBG



Prolight Opto High Bay LED cooler with  
 direct mounting holes for Mean Well  
 HBG series driver  
 $\varnothing 152\text{mm}$  -  $h 100\text{mm}$  -  $R_{th} 0.52^{\circ}\text{C/W}$   
 Cooling performance 9,000 - 18,000 lm

Direct mount	Zhaga holder	Prolight Opto LED COB
<input checked="" type="checkbox"/>	<input checked="" type="checkbox"/>	PACF - 57
	<input checked="" type="checkbox"/>	PACG - 110

### ModuLED Giga 152150-HBG



Prolight Opto High Bay LED cooler with  
 direct mounting holes for Mean Well  
 HBG series driver  
 $\varnothing 152\text{mm}$  -  $h 150\text{mm}$  -  $R_{th} 0.46^{\circ}\text{C/W}$   
 Cooling performance 10,500 - 21,000 lm

Direct mount	Zhaga holder	Prolight Opto LED COB
<input checked="" type="checkbox"/>	<input checked="" type="checkbox"/>	PACG - 110





### CoolBay® Giga-A

Prolight Opto High Bay LED cooler with CoolTube® heat tube  
ø152mm - h200mm - Rth 0.34°C/W  
Cooling performance 14,500 - 29,000 lm

Direct mount	Zhaga holder	Prolight Opto LED COB
	<input checked="" type="checkbox"/>	PACG - 110



### IceLED 450

Prolight Opto Modular Active LED cooler  
ø99mm - h45mm - Rth 0.58°C/W  
Cooling performance 8,200 - 16,400 lm

Direct mount	Zhaga holder	Prolight Opto LED COB
<input checked="" type="checkbox"/> <input checked="" type="checkbox"/>	<input checked="" type="checkbox"/> <input checked="" type="checkbox"/>	PACF - 57 PACG - 110



### IceLED 550

Prolight Opto Modular Active LED cooler  
ø99mm - h55mm - Rth 0.46°C/W  
Cooling performance 10,500 - 21,000 lm

Direct mount	Zhaga holder	Prolight Opto LED COB
<input checked="" type="checkbox"/> <input checked="" type="checkbox"/>	<input checked="" type="checkbox"/> <input checked="" type="checkbox"/>	PACF - 57 PACG - 110



### IceLED Ultra

Prolight Opto Modular Active LED cooler  
ø99mm - h75mm - Rth 0.25°C/W  
Cooling performance 19,000 - 38,000 lm

Direct mount	Zhaga holder	Prolight Opto LED COB
<input checked="" type="checkbox"/>	<input checked="" type="checkbox"/>	PACG - 110

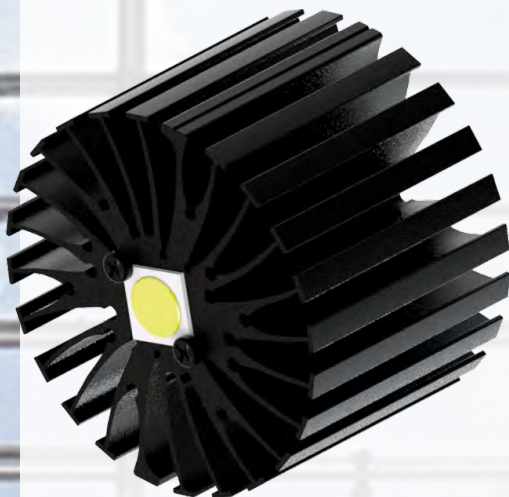


### IceLED Ultra VS


Prolight Opto Modular Active LED cooler  
ø99mm - h75mm - Rth 0.26°C/W  
Cooling performance 14,500 - 29,000 lm

Direct mount	Zhaga holder	Prolight Opto LED COB
	<input checked="" type="checkbox"/>	PACG - 110





Your local distributor:

OUR PROCESS STARTS WITH LISTENING 



No.818, Dashun 2nd Rd., Sanmin Dist.  
Tel: +886-7-3815892  
led@mechatronix-asia.com

Kaohsiung City 80787 Taiwan  
Fax: +886-7-3839293  
www.led-heatsink.com