



## SEOUL SEMICONDUCTOR LED COOLING

ZC series ZC 6, 12, 18, 25, 40, 60, 100 LED COB  
ACrich AC Zhaga 30W LED modules

- Validated Thermal Designs
- Adaptable to your Needs
- Functional & Aesthetic



SEOUL SEMICONDUCTOR

**MTX**  
**MechaTronix**



## Mastering LED Cooling

With the evolution of LED lighting over the last years, the demand for professional thermal solutions has grown exponentially. And now that we no longer remain in the realm of low power LED's, thermal management becomes a critical factor within LED fixtures. To that end, MechaTronix has developed several series of pin-fin and star heat sinks, manufactured through die casting, forging or extrusion. This has resulted in a comprehensive range of more than 400 off-the-shelf available LED coolers, for passive or active heat dissipation.

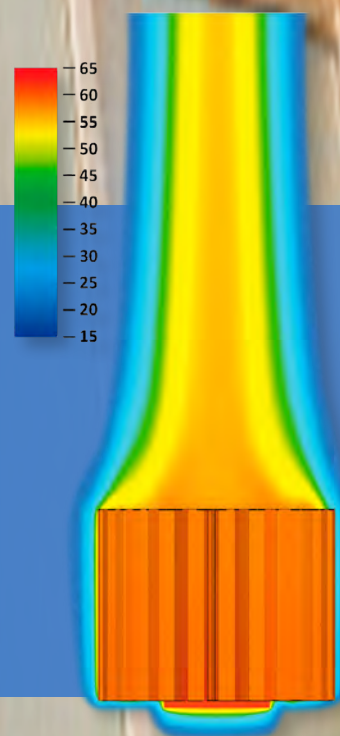
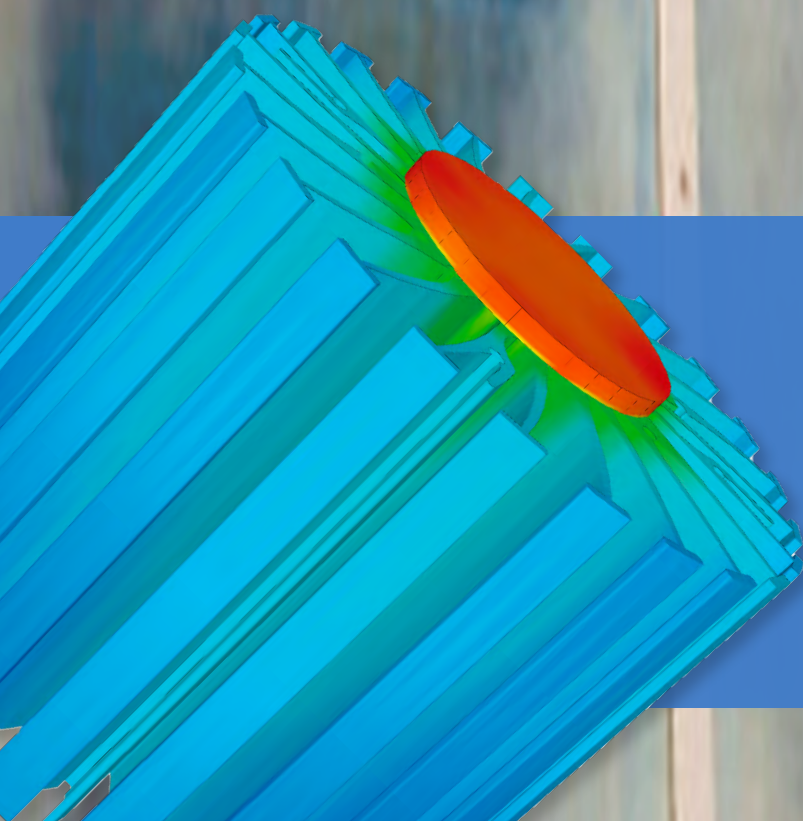
After initial reservations concerning active LED coolers, specialists have found that there really is no better option, when closing in on the 8000 lumen mark. Admittedly, the fan's lifespan becomes somewhat of a focal point in the application of an active LED cooler, but given that the lifespan of the LED engine itself dramatically decreases at high temperatures, the lifespan of the fan looks rather favourable all of a sudden.

MechaTronix' ground breaking ModuLED coolers and its actively cooled sibling IceLED have garnered a lot of attention and positive reviews in the LED market. ModuLED and IceLED are just precursors of a complete range of dedicated and highly effective LED coolers for professional deployment in spotlights, downlights, high bays and a further score of architectural and utility LED applications.

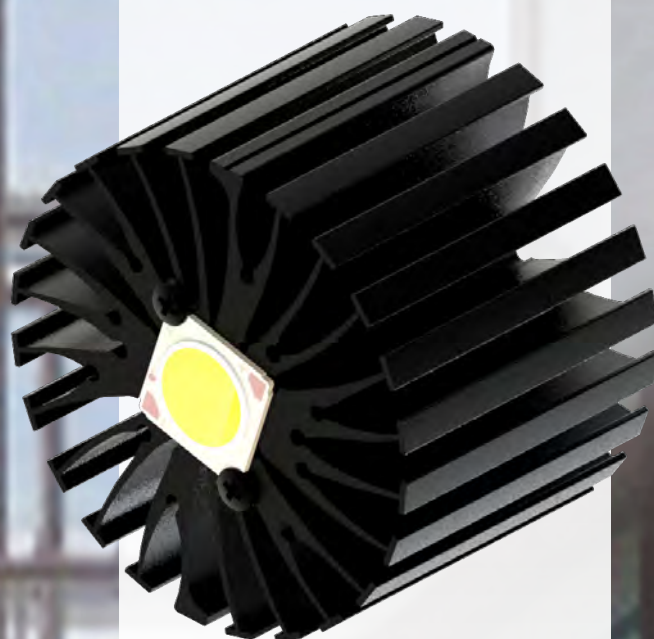
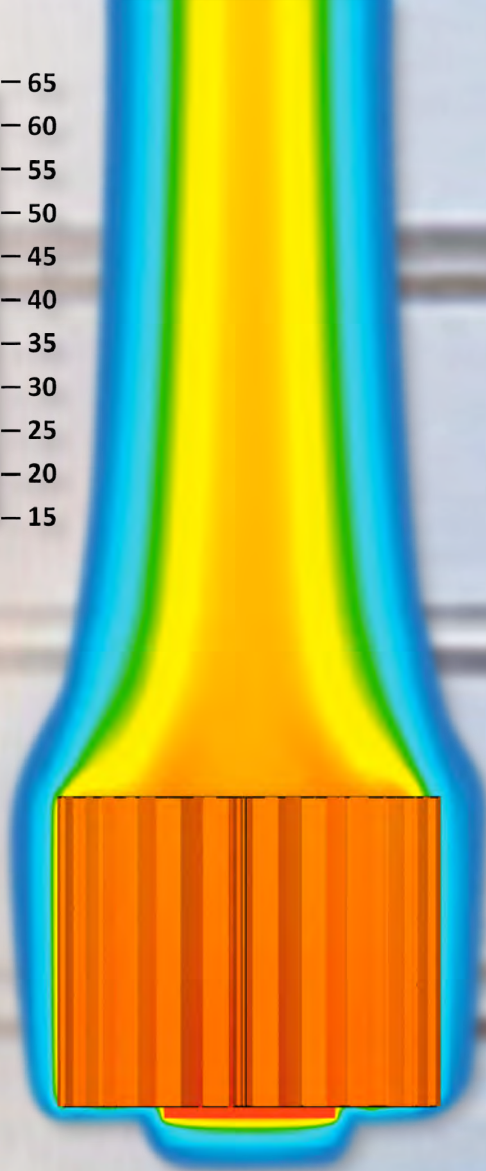
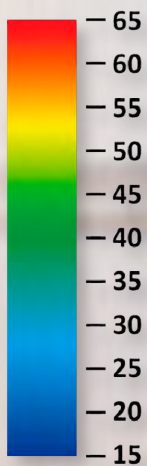
Both ModuLED and IceLED, as well as their upcoming descendants are Zhaga-ready and have a matrix of mounting holes that allows for very easy attachment of a great number of various Seoul Semiconductor LED modules. Simply apply a thermal interface of your choice, put the LED engine in place and fasten with self-tapping screws and you are good to go! No drilling, customisation or special mounting brackets are needed.

Thanks to an extremely thorough thermal verification of all heat sink lines, MechaTronix provides total thermal disclosure for each model, coupled with all Seoul Semiconductor ZC LED COB's and engines. All thermal data is available in the product specifications, that come with every MechaTronix heat sink. In this way, engineers save time and effort during the design stage of their LED fixture and will significantly shorten their time to market.

## OUR PROCESS STARTS WITH LISTENING







 Zhaga

ModuLED  
IceLED

# SEOUL SEMICONDUCTOR LED COOLING

ZC series ZC 4, 6, 12, 18, 25, 40, 60, 100 Z-Power COB

Acrich Acrich MJT COB

## LPF3550-ZHC



Seoul Semi. LED Pin Fin cooler  
ø35mm - h50mm - Rth 7.41°C/W  
Cooling performance 700 - 1,300 lm

| Direct mount | Zhaga holder | Seoul Semiconductor LED COB |
|--------------|--------------|-----------------------------|
| ✓            | ✓            | Acrich MJT 13.5x13.5mm      |
| ✓            | ✓            | ZC4, ZC6                    |

## LPF4768-ZHP



Seoul Semi. LED Pin Fin cooler  
ø47mm - h68mm - Rth 3.9°C/W  
Cooling performance 1,300 - 2,500 lm

| Direct mount | Zhaga holder | Seoul Semiconductor LED COB |
|--------------|--------------|-----------------------------|
|              | ✓            | Acrich MJT 13.5x13.5mm      |
|              | ✓            | Acrich MJT 19x19mm          |
|              | ✓            | ZC4, ZC6, ZC12, ZC18        |

## LPF6050-ZHC



Seoul Semi. LED Pin Fin cooler  
ø60mm - h50mm - Rth 4.0°C/W  
Cooling performance 1,200 - 2,300 lm

| Direct mount | Zhaga holder | Seoul Semiconductor LED COB |
|--------------|--------------|-----------------------------|
| ✓            | ✓            | Acrich MJT 13.5x13.5mm      |
|              | ✓            | Acrich MJT SunLike 19x19mm  |
| ✓            | ✓            | ZC4, ZC6                    |
|              | ✓            | ZC12, ZC18                  |

## LPF6768-ZHP



Seoul Semi. LED Pin Fin cooler  
ø67mm - h68mm - Rth 2.1°C/W  
Cooling performance 2,300 - 4,600 lm

| Direct mount | Zhaga holder | Seoul Semiconductor LED COB |
|--------------|--------------|-----------------------------|
|              | ✓            | Acrich MJT 13.5x13.5mm      |
|              | ✓            | Acrich MJT 19x19mm          |
|              | ✓            | ZC4, ZC6, ZC12, ZC18, ZC25  |

## LPF8050-ZHC



Seoul Semi. LED Pin Fin cooler  
ø80mm - h50mm - Rth 2.34°C/W  
Cooling performance 2,000 - 4,000 lm

| Direct mount | Zhaga holder | Seoul Semiconductor LED COB |
|--------------|--------------|-----------------------------|
|              | ✓            | Acrich MJT 13.5x13.5mm      |
| ✓            | ✓            | Acrich MJT 19x19mm          |
|              | ✓            | ZC4, ZC6, ZC25              |
| ✓            | ✓            | ZC12, ZC18                  |

## LPF8668-ZHC



Seoul Semi. LED Pin Fin cooler  
ø86mm - h68mm - Rth 1.46°C/W  
Cooling performance 3,300 - 6,500 lm

| Direct mount | Zhaga holder | Seoul Semiconductor LED COB |
|--------------|--------------|-----------------------------|
|              | ✓            | Acrich MJT 13.5x13.5mm      |
| ✓            | ✓            | Acrich MJT 19x19mm, 28x28mm |
| ✓            | ✓            | ZC18, ZC25, ZC40            |

## LPF11180-ZHE



Seoul Semi. LED Pin Fin cooler  
ø111mm - h80mm - Rth 1.07°C/W  
Cooling performance 4,800 - 9,600 lm

| Direct mount | Zhaga holder | Seoul Semiconductor LED COB |
|--------------|--------------|-----------------------------|
|              | ✓            | Acrich MJT 19x19mm, 28x28mm |
|              | ✓            | ZC25, ZC40, ZC60            |

## CoolStar® White 4740



Seoul Semi. Designer LED Star cooler  
ø47mm - h40mm - Rth 5°C/W  
Cooling performance 1,000 - 2,000 lm

| Direct mount | Zhaga holder | Seoul Semiconductor LED COB |
|--------------|--------------|-----------------------------|
| ✓            |              | Acrich MJT 13.5x13.5mm      |
| ✓            | ✓            | ZC4, ZC6                    |
|              | ✓            | ZC12, ZC18                  |

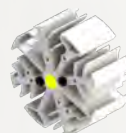
## CoolStar® White 4760



Seoul Semi. Designer LED Star cooler  
ø47mm - h60mm - Rth 4.17°C/W  
Cooling performance 1,200 - 2,400 lm

| Direct mount | Zhaga holder | Seoul Semiconductor LED COB    |
|--------------|--------------|--------------------------------|
| ✓            | ✓            | Acrich MJT 13.5x13.5mm         |
|              | ✓            | Acrich MJT SunLike COB 19x19mm |
| ✓            | ✓            | ZC4, ZC6                       |
|              | ✓            | ZC12                           |

## CoolStar® White 6730



Seoul Semi. Designer LED Star cooler  
ø67mm - h30mm - Rth 3.13°C/W  
Cooling performance 1,600 - 3,100 lm

| Direct mount | Zhaga holder | Seoul Semiconductor LED COB     |
|--------------|--------------|---------------------------------|
| ✓            |              | Acrich MJT 13.5x13.5mm, 19x19mm |
| ✓            |              | Acrich MJT SunLike 13.5x13.5mm  |
| ✓            | ✓            | ZC4, ZC6, ZC12, ZC18            |



# SEOUL SEMICONDUCTOR LED COOLING

ZC series ZC 4, 6, 12, 18, 25, 40, 60, 100 Z-Power COB

Acrich Acrich MJT COB

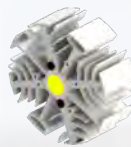
## CoolStar® White 6760



Seoul Semi. Designer LED Star cooler  
ø67mm - h60mm - Rth 2.27°C/W  
Cooling performance 2,100 - 4,200 lm

| Direct mount | Zhaga holder | Seoul Semiconductor LED COB     |
|--------------|--------------|---------------------------------|
| ✓            | ✓            | Acrich MJT 13.5x13.5mm, 19x19mm |
| ✓            | ✓            | Acrich MJT SunLike 13.5x13.5mm  |
| ✓            | ✓            | ZC4, ZC6                        |

## CoolStar® White 8630



Seoul Semi. Designer LED Star cooler  
ø86mm - h30mm - Rth 2.08°C/W  
Cooling performance 2,300 - 4,600 lm

| Direct mount | Zhaga holder | Seoul Semiconductor LED COB     |
|--------------|--------------|---------------------------------|
| ✓            | ✓            | Acrich MJT 13.5x13.5mm, 19x19mm |
| ✓            | ✓            | Acrich MJT SunLike 13.5x13.5mm  |
| ✓            | ✓            | ZC4, ZC6, ZC12, ZC18            |
| ✓            | ✓            | ZC25                            |

## CoolStar® White 8660



Seoul Semi. Designer LED Star cooler  
ø86mm - h60mm - Rth 1.56°C/W  
Cooling performance 3,100 - 6,100 lm

| Direct mount | Zhaga holder | Seoul Semiconductor LED COB     |
|--------------|--------------|---------------------------------|
| ✓            | ✓            | Acrich MJT 13.5x13.5mm, 19x19mm |
| ✓            | ✓            | Acrich MJT 28x28mm              |
| ✓            | ✓            | ZC12, ZC18                      |
| ✓            | ✓            | ZC25, ZC40                      |

## ModuLED Pico 4750



Seoul Semi. Modular LED Star cooler  
ø47mm - h50mm - Rth 5.3°C/W  
Cooling performance 900 - 1,800 lm

| Direct mount | Zhaga holder | Seoul Semiconductor LED COB |
|--------------|--------------|-----------------------------|
| ✓            | ✓            | Acrich MJT 13.5x13.5mm      |
| ✓            | ✓            | ZC4, ZC6, ZC12              |

## ModuLED Pico 4780



Seoul Semi. Modular LED Star cooler  
ø47mm - h80mm - Rth 4.2°C/W  
Cooling performance 1,200 - 2,300 lm

| Direct mount | Zhaga holder | Seoul Semiconductor LED COB     |
|--------------|--------------|---------------------------------|
| ✓            | ✓            | Acrich MJT 13.5x13.5mm, 19x19mm |
| ✓            | ✓            | ZC4, ZC6, ZC12                  |

## ModuLED Nano 7050



Seoul Semi. Modular LED Star cooler  
ø70mm - h50mm - Rth 2.2°C/W  
Cooling performance 2,200 - 4,300 lm

| Direct mount | Zhaga holder | Seoul Semiconductor LED COB     |
|--------------|--------------|---------------------------------|
| ✓            | ✓            | Acrich MJT 13.5x13.5mm, 19x19mm |
| ✓            | ✓            | ZC4, ZC6, ZC12, ZC18            |
| ✓            | ✓            | ZC25                            |

## ModuLED Nano 7080



Seoul Semi. Modular LED Star cooler  
ø70mm - h80mm - Rth 1.8°C/W  
Cooling performance 2,700 - 5,300 lm

| Direct mount | Zhaga holder | Seoul Semiconductor LED COB     |
|--------------|--------------|---------------------------------|
| ✓            | ✓            | Acrich MJT 13.5x13.5mm, 19x19mm |
| ✓            | ✓            | Acrich MJT 28x28mm              |
| ✓            | ✓            | ZC12, ZC18                      |
| ✓            | ✓            | ZC25, ZC40                      |

## ModuLED Micro 8630



Seoul Semi. Modular LED Star cooler  
ø86mm - h30mm - Rth 1.8°C/W  
Cooling performance 2,700 - 5,300 lm

| Direct mount | Zhaga holder | Seoul Semiconductor LED COB     |
|--------------|--------------|---------------------------------|
| ✓            | ✓            | Acrich MJT 13.5x13.5mm, 19x19mm |
| ✓            | ✓            | Acrich MJT 28x28mm              |
| ✓            | ✓            | ZC12, ZC18                      |
| ✓            | ✓            | ZC25, ZC40                      |

## ModuLED Micro 8650



Seoul Semi. Modular LED Star cooler  
ø86mm - h50mm - Rth 1.5°C/W  
Cooling performance 3,200 - 6,400 lm

| Direct mount | Zhaga holder | Seoul Semiconductor LED COB     |
|--------------|--------------|---------------------------------|
| ✓            | ✓            | Acrich MJT 13.5x13.5mm, 19x19mm |
| ✓            | ✓            | Acrich MJT 28x28mm              |
| ✓            | ✓            | ZC12, ZC18                      |
| ✓            | ✓            | ZC25, ZC40                      |

## ModuLED Micro 8680



Seoul Semi. Modular LED Star cooler  
ø86mm - h80mm - Rth 1.2°C/W  
Cooling performance 4,000 - 8,000 lm

| Direct mount | Zhaga holder | Seoul Semiconductor LED COB |
|--------------|--------------|-----------------------------|
| ✓            | ✓            | Acrich MJT 19x19mm          |
| ✓            | ✓            | Acrich MJT 28x28mm          |
| ✓            | ✓            | ZC25, ZC40, ZC60            |

# SEOUL SEMICONDUCTOR LED COOLING

ZC series ZC 4, 6, 12, 18, 25, 40, 60, 100 Z-Power COB

Acrich Acrich MJT COB

## ModuLED 9950



Seoul Semi. Modular LED Star cooler  
ø99mm - h50mm - Rth 1.34°C/W  
Cooling performance 3,600 - 7,200 lm

| Direct mount | Zhaga holder | Seoul Semiconductor LED COB |
|--------------|--------------|-----------------------------|
| ✓            | ✓            | Acrich MJT 19x19mm, 28x28mm |
| ✓            | ✓            | ZC12/ZC18                   |
| ✓            | ✓            | ZC25, ZC40, ZC60            |

## ModuLED 9980



Seoul Semi. Modular LED Star cooler  
ø99mm - h80mm - Rth 1.02°C/W  
Cooling performance 4,700 - 9,400 lm

| Direct mount | Zhaga holder | Seoul Semiconductor LED COB |
|--------------|--------------|-----------------------------|
| ✓            | ✓            | Acrich MJT 19x19mm, 28x28mm |
| ✓            | ✓            | ZC25, ZC40, ZC60            |

## ModuLED Mega 13420



Seoul Semi. Modular LED Star cooler  
ø134mm - h20mm - Rth 1.32°C/W  
Cooling performance 3,700 - 7,300 lm

| Direct mount | LED holder | Seoul Semiconductor LED COB |
|--------------|------------|-----------------------------|
| ✓            | ✓          | Acrich MJT 19x19mm, 28x28mm |
| ✓            | ✓          | ZC18, ZC25, ZC40            |

## ModuLED Mega 13450-HBG



Seoul Semi. High Bay LED cooler with  
direct mounting holes for Mean Well  
HBG series driver  
ø134mm - h50mm - Rth 0.88°C/W  
Cooling performance 5,500 - 11,000 lm

| Direct mount | LED holder | Seoul Semiconductor LED COB |
|--------------|------------|-----------------------------|
| ✓            | ✓          | Acrich MJT 19x19mm, 28x28mm |
| ✓            | ✓          | ZC25, ZC40, ZC60, ZC100     |

## ModuLED Mega 134100-HBG



Seoul Semi. High Bay LED cooler with  
direct mounting holes for Mean Well  
HBG series driver  
ø134mm - h100mm - Rth 0.67°C/W  
Cooling performance 7,200 - 14,300 lm

| Direct mount | LED holder | Seoul Semiconductor LED COB |
|--------------|------------|-----------------------------|
| ✓            | ✓          | Acrich MJT 19x19mm, 28x28mm |
| ✓            | ✓          | ZC60, ZC100                 |

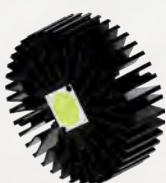
## ModuLED Giga 15220



Seoul Semi. Modular LED Star cooler  
ø152mm - h20mm - Rth 1.13°C/W  
Cooling performance 4,300 - 8,500 lm

| Direct mount | LED holder | Seoul Semiconductor LED COB |
|--------------|------------|-----------------------------|
| ✓            | ✓          | Acrich MJT 19x19mm          |
| ✓            | ✓          | Acrich MJT 28x28mm          |
| ✓            | ✓          | ZC25, ZC40, ZC60            |

## ModuLED Giga 15250



Seoul Semi. Modular LED Star cooler  
ø152mm - h50mm - Rth 0.7°C/W  
Cooling performance 6,800 - 13,500 lm

| Direct mount | LED holder | Seoul Semiconductor LED COB |
|--------------|------------|-----------------------------|
| ✓            | ✓          | Acrich MJT 19x19mm          |
| ✓            | ✓          | Acrich MJT 28x28mm          |
| ✓            | ✓          | ZC40, ZC60, ZC100           |

## ModuLED Giga 152100-HBG



Seoul Semi. High Bay LED cooler with  
direct mounting holes for Mean Well  
HBG series driver  
ø152mm - h100mm - Rth 0.52°C/W  
Cooling performance 9,000 - 18,000 lm

| Direct mount | LED holder | Seoul Semiconductor LED COB |
|--------------|------------|-----------------------------|
| ✓            | ✓          | Acrich MJT 28x28mm          |
| ✓            | ✓          | Acrich MJT 38x38mm          |
| ✓            | ✓          | ZC100                       |



# SEOUL SEMICONDUCTOR LED COOLING

ZC series ZC 4, 6, 12, 18, 25, 40, 60, 100 Z-Power COB

Acrich Acrich MJT COB



## ModuLED Giga 152150-HBG

Seoul Semi. High Bay LED cooler with direct mounting holes for Mean Well HBG series driver  
ø152mm - h150mm - Rth 0.46°C/W  
Cooling performance 10,500 - 21,000 lm

| Direct mount                        | LED holder                          | Seoul Semiconductor LED COB |
|-------------------------------------|-------------------------------------|-----------------------------|
| <input checked="" type="checkbox"/> | <input checked="" type="checkbox"/> | Acrich MJT 28x28mm          |
| <input checked="" type="checkbox"/> | <input checked="" type="checkbox"/> | Acrich MJT 38x38mm          |
| <input checked="" type="checkbox"/> | <input checked="" type="checkbox"/> | ZC100                       |



## CoolBay® Giga-A

Seoul Semi. High Bay LED cooler with CoolTube® heat tube and direct mounting holes for Mean Well HBG series driver  
ø152mm - h200mm - Rth 0.34°C/W  
Cooling performance 14,500 - 29,000 lm

| Direct mount                        | LED holder                          | Seoul Semiconductor LED COB |
|-------------------------------------|-------------------------------------|-----------------------------|
| <input checked="" type="checkbox"/> | <input checked="" type="checkbox"/> | Acrich MJT 38x38mm          |



## IceLED 450

Seoul Semi. Modular Active LED cooler  
ø99mm - h45mm - Rth 0.58°C/W  
Cooling performance 8,200 - 16,400 lm

| Direct mount                        | Zhaga holder                        | Seoul Semiconductor LED COB |
|-------------------------------------|-------------------------------------|-----------------------------|
| <input checked="" type="checkbox"/> | <input checked="" type="checkbox"/> | Acrich MJT 28x28mm          |
| <input checked="" type="checkbox"/> | <input checked="" type="checkbox"/> | Acrich MJT 38x38mm          |
| <input checked="" type="checkbox"/> | <input checked="" type="checkbox"/> | ZC60                        |
| <input checked="" type="checkbox"/> | <input checked="" type="checkbox"/> | ZC100                       |



## CoolBay® Tera-A

Seoul Semi. High Bay LED cooler with CoolTube® heat tube and direct mounting holes for Mean Well HBG series driver  
ø192mm - h250mm - Rth 0.22°C/W  
Cooling performance 22,000 - 44,000 lm

| Direct mount                        | Zhaga holder                        | Seoul Semiconductor LED COB |
|-------------------------------------|-------------------------------------|-----------------------------|
| <input checked="" type="checkbox"/> | <input checked="" type="checkbox"/> | Acrich MJT 38x38mm          |



## IceLED 550

Seoul Semi. Modular Active LED cooler  
ø99mm - h55mm - Rth 0.46°C/W  
Cooling performance 10,500 - 21,000 lm

| Direct mount                        | Zhaga holder                        | Seoul Semiconductor LED COB |
|-------------------------------------|-------------------------------------|-----------------------------|
| <input checked="" type="checkbox"/> | <input checked="" type="checkbox"/> | Acrich MJT 28x28mm          |
| <input checked="" type="checkbox"/> | <input checked="" type="checkbox"/> | Acrich MJT 38x38mm          |
| <input checked="" type="checkbox"/> | <input checked="" type="checkbox"/> | ZC100                       |



## IceLED Ultra

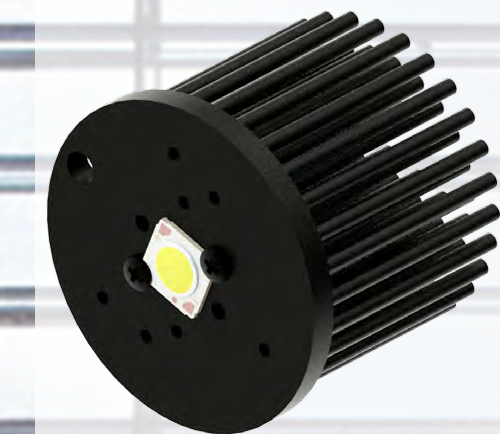
Seoul Semi. Modular Active LED cooler  
ø99mm - h75mm - Rth 0.25°C/W  
Cooling performance 19,000 - 38,000 lm

| Direct mount                        | Zhaga holder                        | Seoul Semiconductor LED COB |
|-------------------------------------|-------------------------------------|-----------------------------|
| <input checked="" type="checkbox"/> | <input checked="" type="checkbox"/> | Acrich MJT 38x38mm          |



Your local distributor:

OUR PROCESS STARTS WITH LISTENING 



No.818, Dashun 2nd Rd., Sanmin Dist.  
Tel: +886-7-3815892  
[led@mechatronix-asia.com](mailto:led@mechatronix-asia.com)

Kaohsiung City 80787 Taiwan  
Fax: +886-7-3839293  
[www.led-heatsink.com](http://www.led-heatsink.com)