



■ Features :

- Universal AC input / Full range
- No load power consumption <0.5W
- 2 pole EURO plug
- Class II power ( without earth pin)
- Protections: Short circuit / Overload / Over voltage
- Pass LPS
- Fully enclosed plastic case
- Approvals: FCC / CE
- 1 year warranty

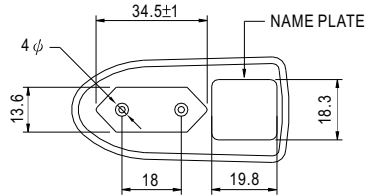


**SPECIFICATION**

ORDER NO.	GC06E-0P1J	GC06E-1P1J	GC06E-11P1J	GC06E-2P1J	GC06E-4P1J	
OUTPUT	SAFETY MODEL NO.	GPSU06-0-CC	GPSU06-1-CC	GPSU06-1-1-CC	GPSU06-2-CC	GPSU06-4-CC
	DC VOLTAGE <span style="float:right">Note.2</span>	3V	5.6V	7.2V	8.4V	14.3V
	RATED CURRENT	1.33A	0.89A	0.83A	0.71A	0.41A
	CURRENT RANGE	0 ~ 1.33A	0 ~ 0.89A	0 ~ 0.83A	0 ~ 0.71A	0 ~ 0.41A
	RATED POWER	4W	5W	6W	6W	6W
	RIPPLE & NOISE (max.) <span style="float:right">Note.3</span>	50mVp-p	50mVp-p	80mVp-p	80mVp-p	100mVp-p
	VOLTAGE ADJ. RANGE	Fixed				
	VOLTAGE TOLERANCE <span style="float:right">Note.4</span>	±5.0%	±5.0%	±5.0%	±5.0%	±3.0%
	LINE REGULATION <span style="float:right">Note.5</span>	±1.0%	±0.5%	±0.5%	±0.5%	±0.5%
	LOAD REGULATION <span style="float:right">Note.6</span>	±5.0%	±5.0%	±5.0%	±5.0%	±3.0%
SETUP, RISE, HOLD UP TIME	200ms, 50ms, 16ms at full load					
INPUT	VOLTAGE RANGE	90 ~ 264VAC 135 ~ 370VDC				
	FREQUENCY RANGE	47 ~ 63Hz				
	EFFICIENCY (Typ.) <span style="float:right">Note.7</span>	45%	60%	65%	70%	75%
	AC CURRENT	0.3A / 100VAC				
	INRUSH CURRENT (max.)	30A / 230VAC				
LEAKAGE CURRENT(max.)	0.25mA / 240VAC					
PROTECTION	OVERLOAD	105 ~ 200% rated output power Protection type : Constant current limiting, recovers automatically after fault condition is removed				
	OVER VOLTAGE	110 ~ 140% rated output voltage Protection type : Clamp by zener diode				
ENVIRONMENT	WORKING TEMP.	0 ~ +50°C (Refer to output load derating curve)				
	WORKING HUMIDITY	20% ~ 90% RH non-condensing				
	STORAGE TEMP., HUMIDITY	-20 ~ +85°C, 10 ~ 95% RH				
	TEMP. COEFFICIENT	±0.03% / °C (0 ~ 50°C)				
	VIBRATION	10 ~ 500Hz, 2G 10min./1cycle, period for 60min. each along X, Y, Z axes				
SAFETY & EMC <span style="float:right">(Note. 8)</span>	WITHSTAND VOLTAGE	I/P-O/P:4242VDC				
	ISOLATION RESISTANCE	I/P-O/P:100M Ohms / 500VDC / 25°C / 70% RH				
	EMI CONDUCTION & RADIATION	Compliance to EN55022 class B				
	HARMONIC CURRENT	Compliance to EN61000-3-2,3				
	EMS IMMUNITY	Compliance to EN61000-4-2,3,4,5,6,11, light industry level, criteria A				
OTHERS	MTBF	500Khrs min. MIL-HDBK-217F(25°C)				
	DIMENSION	32*66*42.5mm (L*W*H)				
	PACKING	100g ; 90pcs / 10Kg / CARTON				
CONNECTOR	PLUG	Standard type P1J: 2.1φ * 5.5φ * 11mm, tuning fork type center positive for stock ; Other type available by customer requested				
	CABLE	Standard type 20Awg UL1185 6ft for stock ; Other type available by customer requested				
NOTE	<p>1.All parameters are specified at 230VAC input, rated load, 25°C 70% RH Ambient.</p> <p>2.DC voltage: The output voltage set at point measure by plug terminal &amp; 50% load.</p> <p>3.Ripple &amp; noise are measured at 20MHz by using a 12" twisted pair terminated with a 0.1uf &amp; 47uf capacitor.</p> <p>4.Tolerance: includes set up tolerance, line regulation, load regulation.</p> <p>5.Line regulation is measured from low line to high line at rated load.</p> <p>6.Load regulation is measured from 0% to 100% rated load</p> <p>7.Efficiency is measured at 230VAC.</p> <p>8.The power supply is considered a component which will be installed into a final equipment. The final equipment must be re-confirmed that it still meets EMC directives.</p>					

■ Mechanical Specification

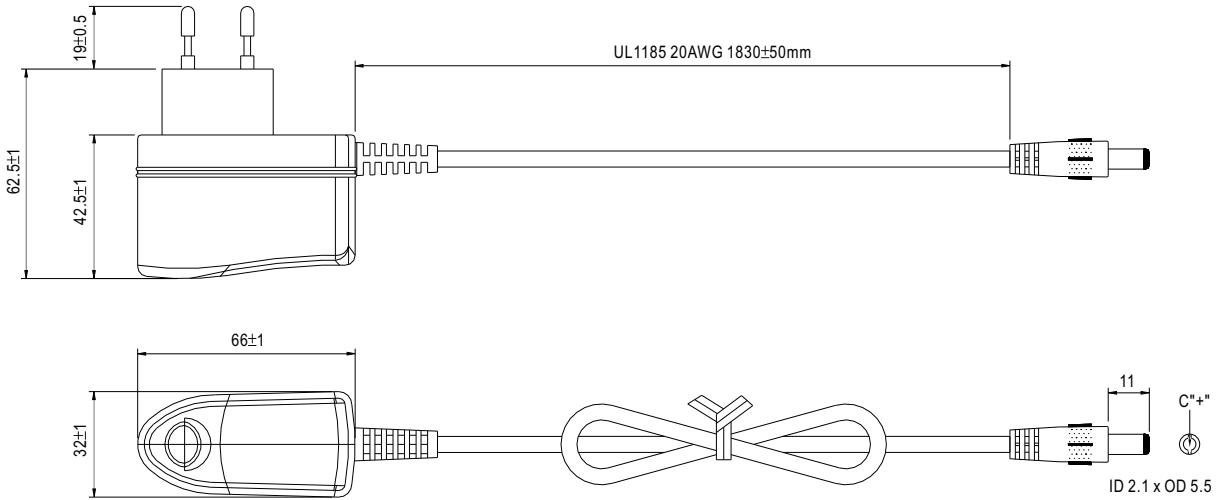
Unit:mm



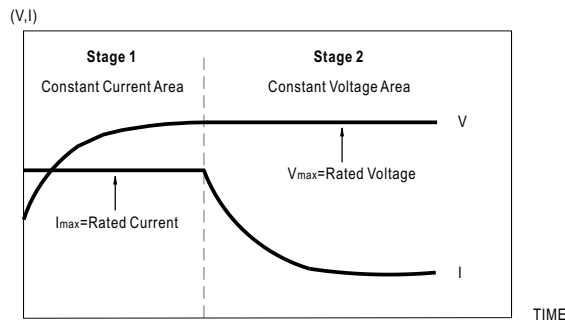
■ Plug Assignment

Standard plug: P1J (option)

P1J	
P/N	OUTPUT
CENTER	+



■ Charging Curve

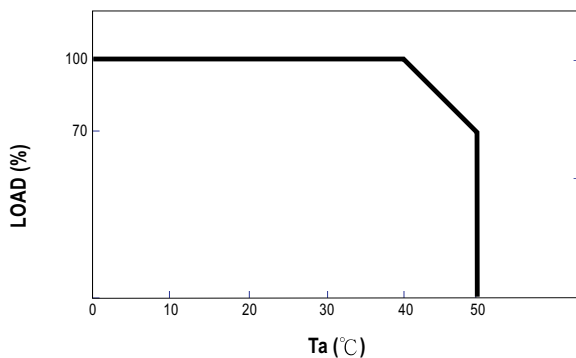


■ Plug Assignment

Standard plug: P1J (option)

P1J	
P/N	OUTPUT
CENTER	+

■ Derating Curve



■ Static Characteristics

