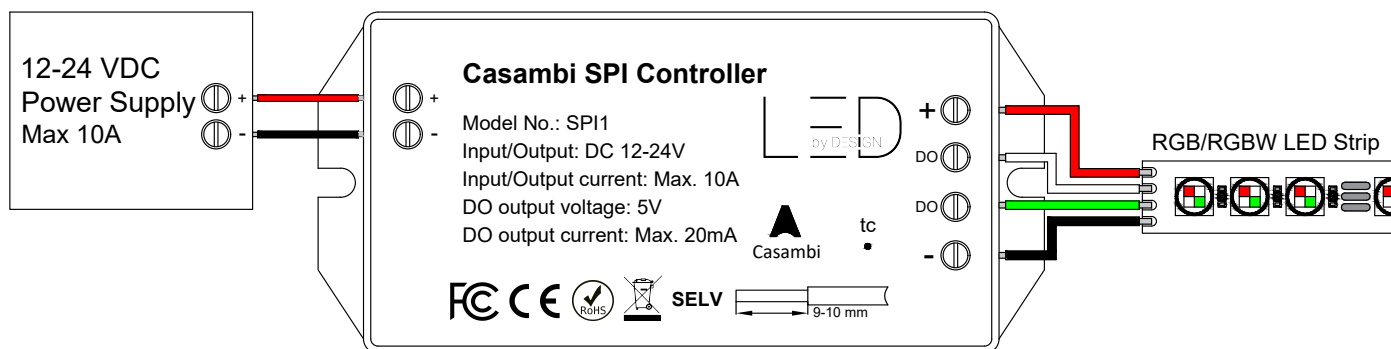


Item name	Casambi SPI Controller
Ordering code	SPI1
Item code	SPI1
Date	23-01-2024

## Casambi SPI Controller



### Description

Casambi SPI controller by LED BY DESIGN is a two-channel LED strip controller that supports 255 modes including speed, direction, and many more, all of which can be simply controlled using the Casambi app. Additionally, we can control the dimming, RGB / RGBW colour options using the Casambi App.

For RGB, it supports different ICS: WS2811, WS2812, TM1804, UCS1903, and SM16703.

RGBW supports ICS: TM1814.

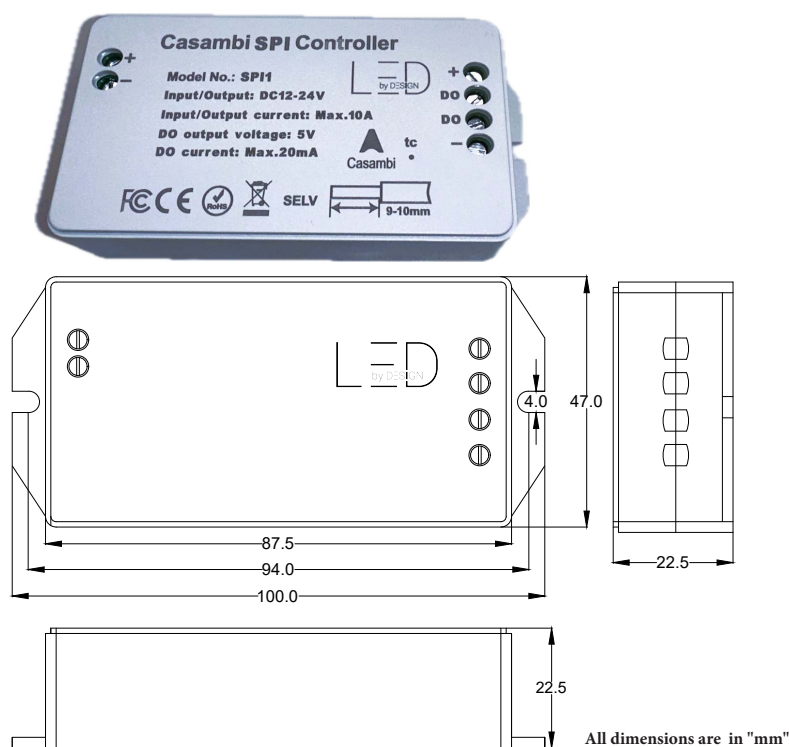
### Control

Dimmable by Casambi app which can be downloaded free of charge from Apple App Store and Google Play Store.

### Technical Information

Input Voltage	12-24V DC
Max. input current	10A
Output current	Max. 20mA
Output Voltage	5V
Max Output Power	120W @12VDC / 240W @24VDC
Wire type	14-22AWG
Device Control	PWM by Casambi App
Case size	100 x 47 x 23 mm
Weight	51g
Protection	IP20
Operating temp	-20 to 50°C
Installation	Remote
Total Supported Modes	255 Modes
Control options	Available profiles
CHIP range	RGB,RGBW
Channel order	Any

Certificates:  
**CE, FCC, LVD(2014/35/EU)\*\***



**CASAMBI**

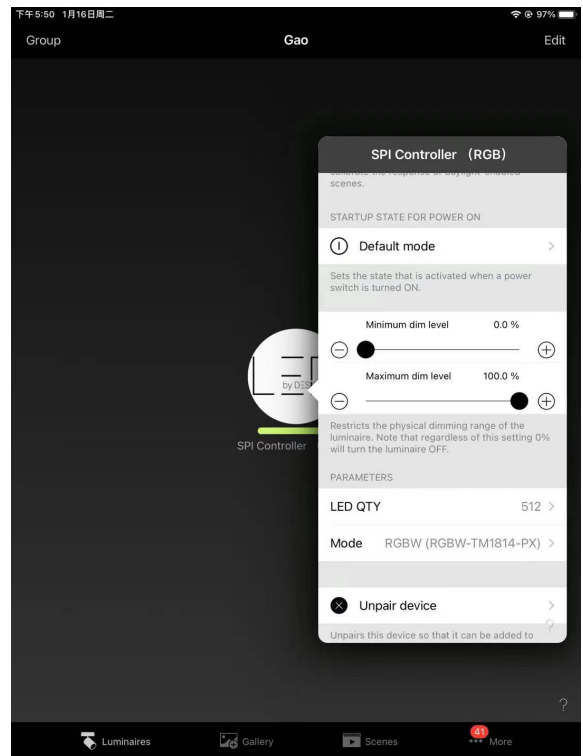
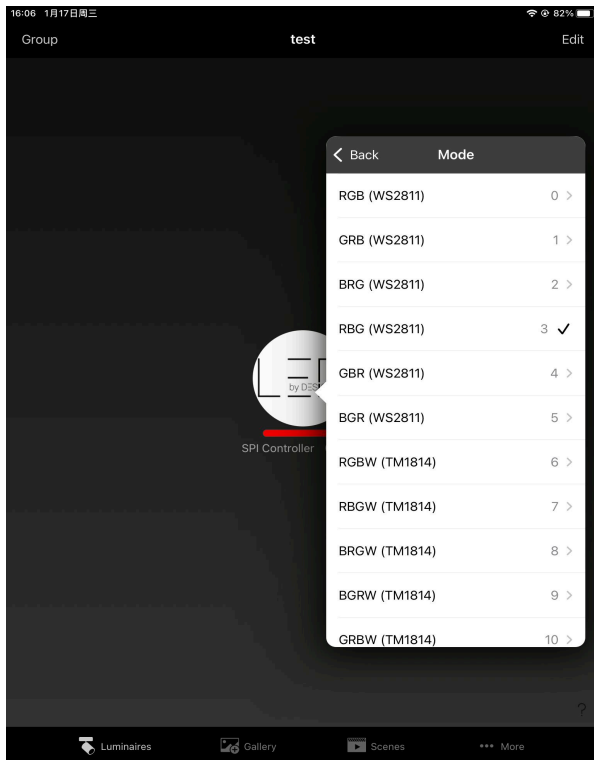
FCC CE RoHS IP20

NOTES: \*\*Low Voltage Directive (2014/35/EU): The products applicative voltage is under 75VDC of LVD minimum adopted voltage.  
For more information and user manual please contact: [sales@ledbydesign.asia](mailto:sales@ledbydesign.asia)

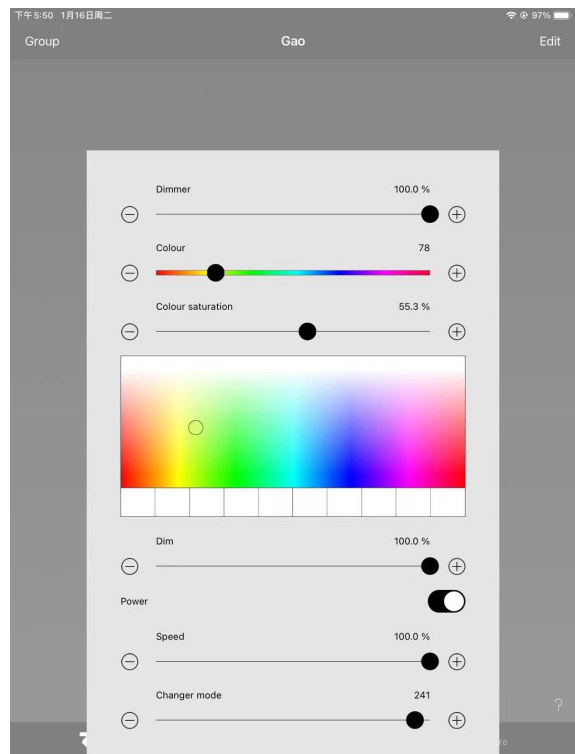
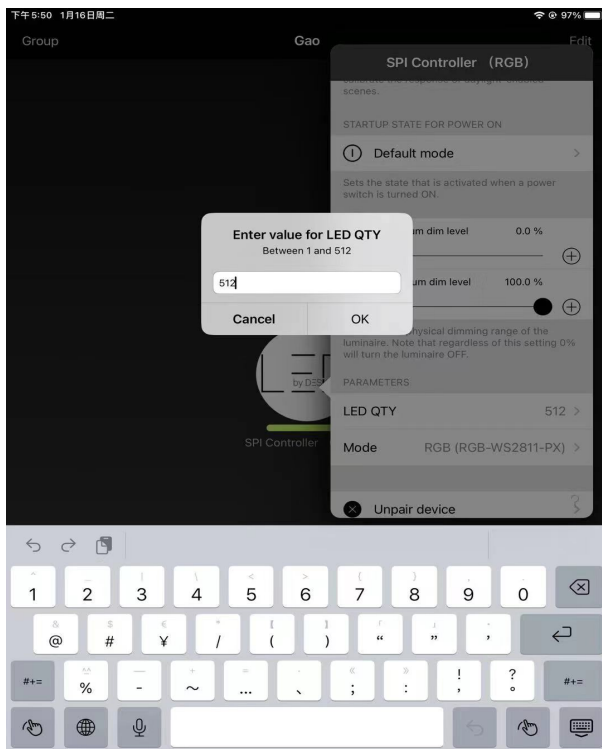
We reserve the right to change specifications without prior notification.

Item name	Casambi SPI Controller
Ordering code	SPI1
Item code	SPI1
Date	23-01-2024

## Screenshots of the UI/Settings page:



**NOTE: For RGB there are additional supported modes:  
WS2812, TM1804, UCS1903, SM16703**



**Total 255 Modes are supported**

NOTES: \*\*Low Voltage Directive (2014/35/EU): The products applicative voltage is under 75VDC of LVD minimum adopted voltage.  
For more information and user manual please contact: [sales@ledbydesign.asia](mailto:sales@ledbydesign.asia)

We reserve the right to change specifications without prior notification.