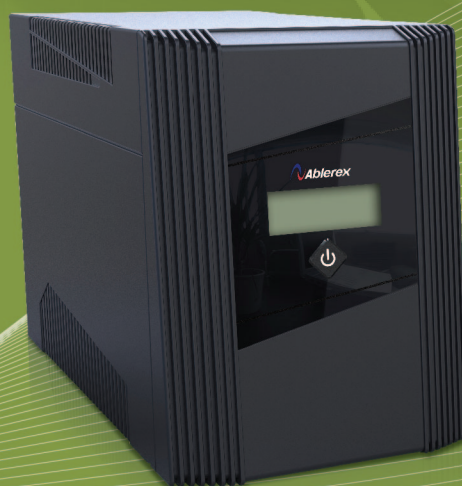




Glamor Series (450VA-2000VA) Line-interactive UPS

The Glamor series UPS is the most cost effective solution in power protecting and power managing your internet, Ethernet small network and valuable peripherals.

- Built-in AVR
- LED/LCD Display(Optional)
- AC Auto Restart
- Cold start function



Glamor Series Line-interactive UPS

MODEL		GR 450	GR 650	GR 850	GR 1000	GR 1500	GR 2000
Input	Voltage **	160Vac~290Vac					
	Frequency	45~65Hz(Auto sensing)					
Output	Capacity	270W	380W	500W	600W	900W	1200W
	Voltage (Battery mode)	220/230/240Vac ±10 %					
	Frequency (Battery mode)	50/60Hz ±1Hz					
	Transfer Time	2~6ms(typical)					
	Waveform	Simulated SineWave					
Battery	Type & Number	12V/5Ah x 1	12V/7Ah x 1	12V/9Ah x 1	12V/7Ah x 2	12V/7Ah x 2	12V/9Ah x 2
	Recharge Time (to 90%)	4~6 hours					
Display	LCD (Option)	AC mode, AVR mode, Battery mode, Battery level, Load level, Input voltage, Output voltage, Fault, and Battery weak					
	LED (Standard)	3 LEDs: Line mode, Battery mode and Fault			6 LEDs: Line/Battery mode, Fault, Load/Battery level		
Alarm	Audible or Visual	Battery mode / Battery low / Overload / System Fault					
Protection	Full Protection	Overload, Short circuit, Discharge, overcharge and optional RJ-11/RJ-45 surge protection					
Function	DC Start	Yes					
	Plug-in Charging	Yes					
Physical	Dimension (WxHxD, mm)	100 x 140 x 292			148 x 198 x 315		
	Net Weight (kgs)	3.6	4.5	5	8	11.5	12
Environment	Operation Temperature	0- 40°C					
	Operation Humidity	0-95 % (Without condensing)					
	Altitude	1000m without Derating					
	Noise Level	≤ 40dB					
Interface	Interface (Option)	USB, RS-232					
	Compatible Platforms	Microsoft Windows series, Linux, Mac, etc.					
Standards and Certifications**	Safety	EN62040-1					
	EMC	EN62040-2, EN61000-3-2, EN61000-3-3					
	Marks	CE					

* Specifications subject to change without notice, and the final explanation rights are reserved by AblereX

**Depending on the model and voltage, more information please contact with AblereX