

# HDW190\_AWTC

**19.0-Inch, 1280\*RGB\*1024, 16.7M Colors, IPS screen**

**Capacitive touch, HDMI interface display**



## ● Display

Item	Parameter	Description
Color	16.7M (16777216) colors	24 bit color 8R8G8B
Panel Type	IPS	IPS TFT LCM ,wide viewing angle
Module	G190EG01 V.1	by AU Optronics
Viewing Angle	85/85/85/85 (L/R/U/D)	Best View: symmetrical
Active Area (A.A.)	376.32 mm(W) * 301.06mm(H)	1280 * 1024
View Area (V.A.)	377.32 mm(W) * 302.06mm(H)	1280 * 1024
Resolution	1280 * 1024	-
Backlight	LED	≥20000H (Continuous working with maximum brightness, time of brightness halves)
Brightness	250nit	-

Note: Displaying of high-contrast still images for more than 30 minutes may result in residual images. Please add animation to avoid this problem.

## ● Voltage & Current

Item	Parameter	Unit
Rated Power	16.8	W
Operation Voltage	12	V

## ● Reliability Test

Item	Conditions	Min	Typ.	Max	Unit
Working Temperature	60%RH at 12V voltage	0	25	50	℃
Storage Temperature	-	-20	25	60	℃
Working Humidity	25℃	10%	60%	90%	RH

## ● Interface

Item	Description
Socket	12V power interface, 4Pin_2.0mm power interface, HDMI interface, VGA interface, USB touch interface
USB	Yes (Only supports touch screen connection)
SD Slot	None

## ● Peripheral

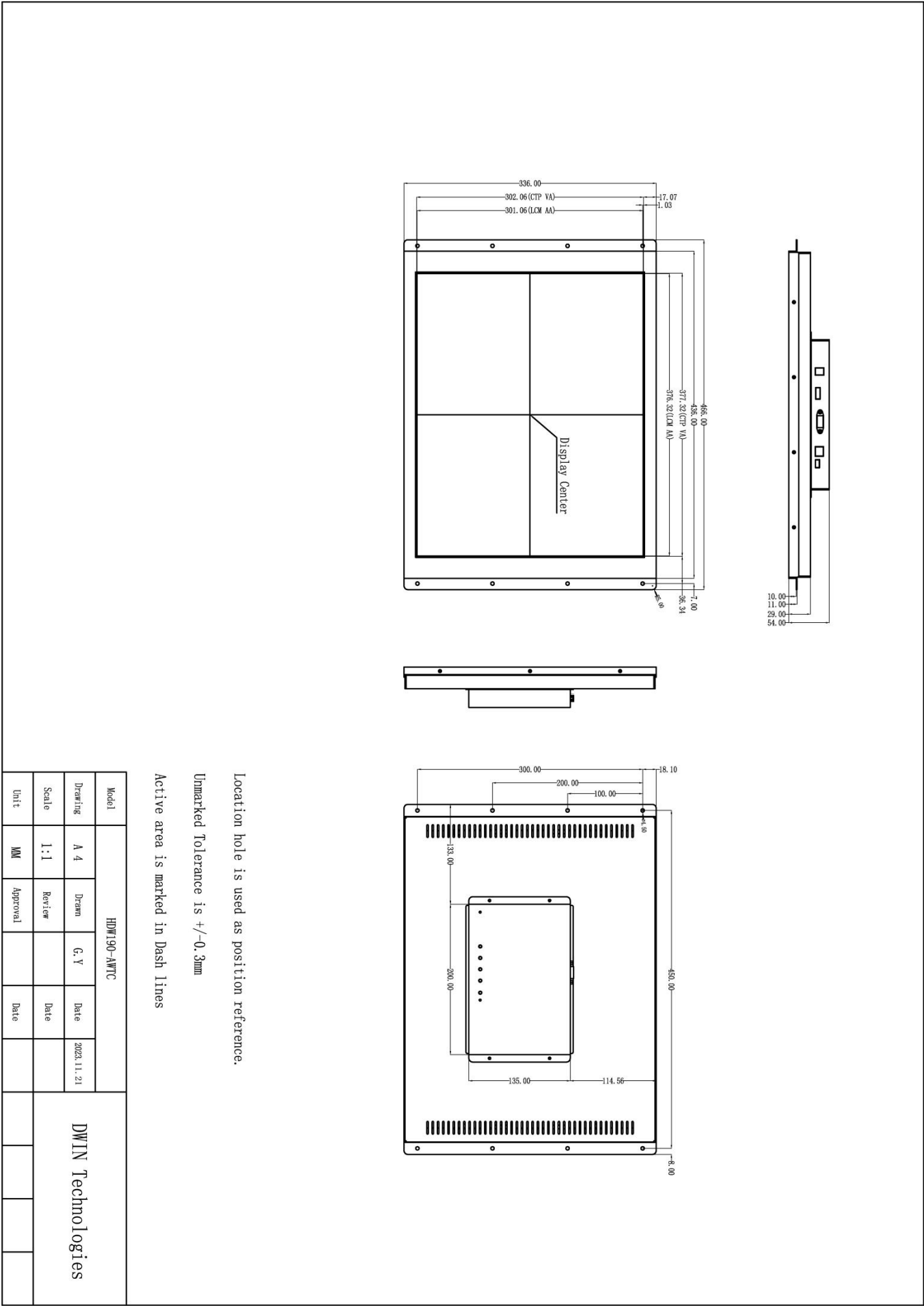
Peripheral	Capacitive touch panel
------------	------------------------

## ● Packing Capacity & Dimension

Dimension				
Dimension	466.00(W)*336.00(H)*54.00(T)mm			
Net Weight	-			
Packing Capacity				
Model	Size	Layer	Quantity/Layer	Quantity(Pcs)
Carton1:	610mm(L)*390mm(W)*100mm(H)	1	1	1
Carton2:	660mm(L)*440mm(W)*430mm(H)	5	1	5

Disclaimer:

- 1, The product design is subject to alternation and improvement without prior notice.
- 2, There are multiple parallel raw materials coexisting to guarantee the stable supply.If customers have particular raw material preferences or requirements, please contact the sales personnel.



## Revision Records

Rev	Revise Date	Content	Editor
00	2023-11-21	First Edition	YML

Please contact us if you have any questions about the use of this document or our products, or if you would like to know the latest information about our products:

Customer service Tel: +86-400-018-9008

Customer service E-mail: [dwinhmi@dwin.com.cn](mailto:dwinhmi@dwin.com.cn)

Website: [www.dwin-global.com](http://www.dwin-global.com)

DWIN Developer Forum: <https://forums.dwin-global.com/index.php/forums>

Thank you all for continuous support of DWIN, and your approval is the driving force of our progress!

### Important Disclaimer

DWIN reserves the right to make any changes to product designs without prior notice.

Customers should ensure strictly adhering to all the relevant standards and requirements during the product application process, including but not limited to functional safety, information security, and regulatory provisions. DWIN shall not bear any joint and several liability for any consequences that may arise from customers' adoption of DWIN products. In particular, for risks that may lead to significant property losses, environmental hazards, personal injury, or even death, especially in high-risk application areas such as military applications, flammable and explosive places, and life-saving medical equipment, customers should independently assess the risks and take corresponding preventive and protective measures. DWIN shall not bear any relevant responsibility.