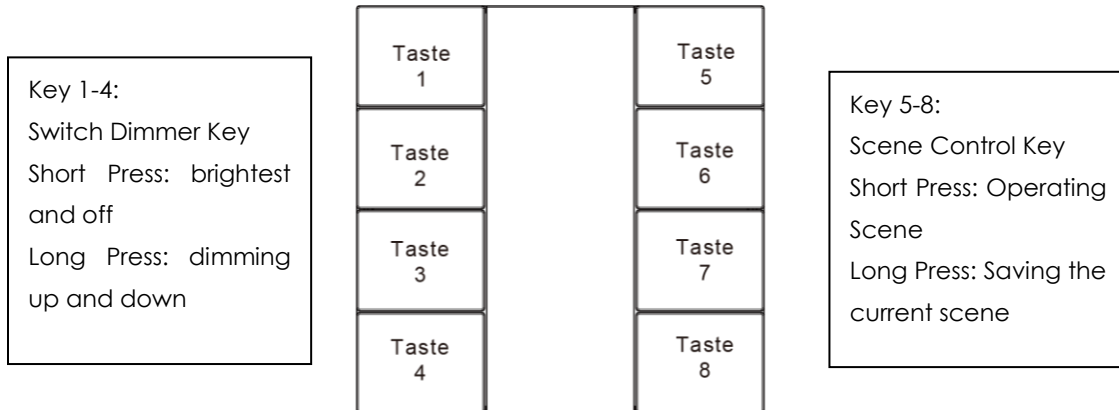


# LED DALI Eight-key Mechanical Panel

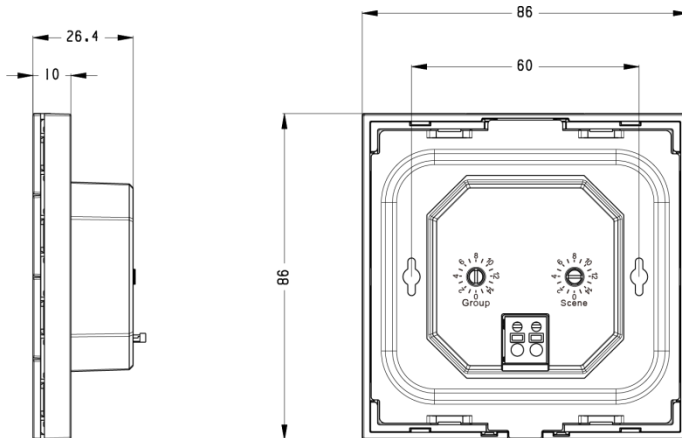


## 1. Production Parameters

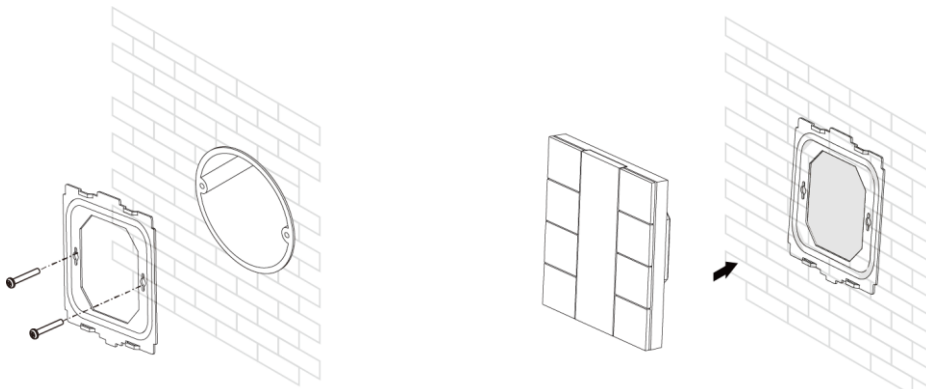
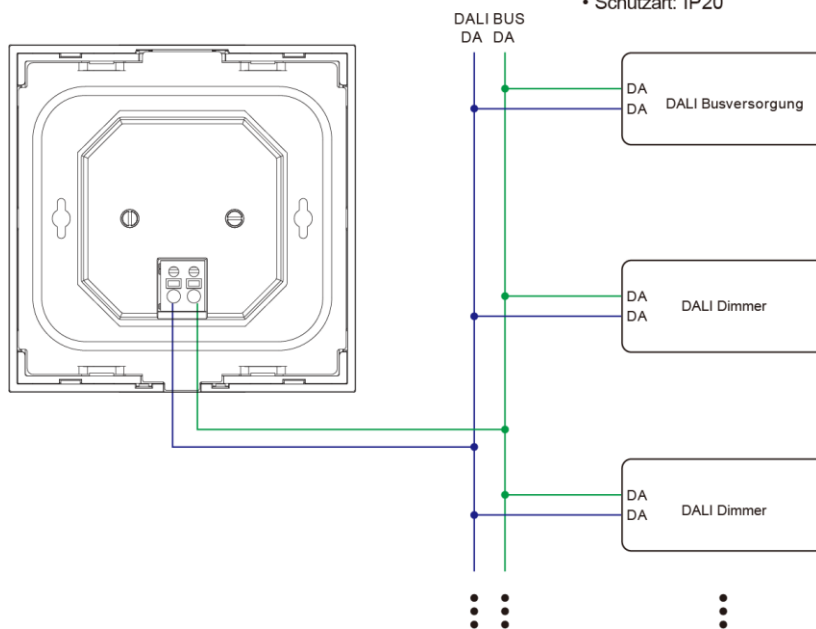
Output	DALI Signal
Power supply mode	Powered via DALI
Operating Current	10mA
Operating Temperature	0-40°C
Air Humidity	8%-80%

- Available for four single-channel DALI dimmers
- Slim panel design
- Backlit keys for night operation
- Powered directly by DALI
- Support to save and run 4 DALI scenes
- Support the control of 4 groups or 3 groups + 1 broadcast
- Easy installation with mounting frame
- Protection class: IP20

## 2. Installation Wiring



- Einfache Installation mittels Montagerahmens
- Schutzart: IP20



### 3. Safety Warning

- Do not install the product under charged condition and do not expose the product to moisture.

Instructions for use:

1. Follow the instructions to connect the DALI push button dimmer.
2. Use the group switch and scene switch on the back to set the desired DALI group and the scene you wish to control from the panel, as well as the desired scene that the panel should be used for. The group and scene assignments can be found in the table on the next page.

### 4. Instructions for using the keys

By short presses on the left side keys 1-4 you can turn the corresponding light groups on and off. Or long press to turn up and down the brightness of the corresponding light group.

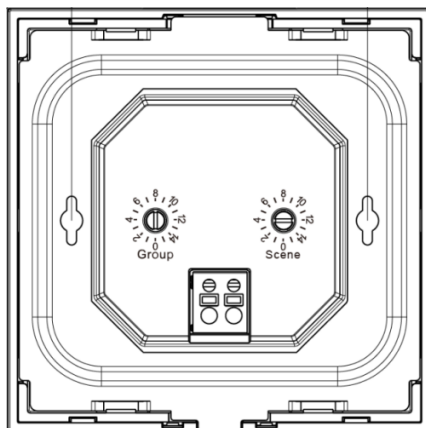
#### Key 1-4

Short press	Turn to the brightest/Turn off
Long press	Continuous brightening/darkening

#### Key 5-8

Short press	Run the corresponding scene
Long press	Save the current scene

### 5. Instructions for using the knob



1 ) Knob "Group" , change the lights of different groups controlled by key

1-4 (BC for broadcast control)

Rotary position	0	1	2	3	4	5	6	7	8	9	10	11	12	13	14	15
Key 1	BC	0	1	2	3	4	5	6	7	8	9	10	11	12	13	14
Key 2	0	1	2	3	4	5	6	7	8	9	10	11	12	13	14	BC
Key 3	1	2	3	4	5	6	7	8	9	10	11	12	13	14	BC	0
Key 4	2	3	4	5	6	7	8	9	10	11	12	13	14	BC	0	1

2 ) Knob "Scene" , change key 5-8 to control different scenes.

Rotary position	0	1	2	3	4	5	6	7	8	9	10	11	12	13	14	15
Key 5	0	1	2	3	4	5	6	7	8	9	10	11	12	13	14	15
Key 6	1	2	3	4	5	6	7	8	9	10	11	12	13	14	15	0
Key 7	2	3	4	5	6	7	8	9	10	11	12	13	14	15	0	1
Key 8	3	4	5	6	7	8	9	10	11	12	13	14	15	0	1	2

## 6. LED Instructions

The white LED blinks once when you click the key.

The white LED lights up when you long press the key, and turns off when you release it.