

## Control and Installations

There are a lot of different control mode systems for dimming and RGB control of LED systems as DMX, DALI, WIFI, RF, IF.

The easiest way is the RF (radio frequency) system. For other systems or other remote design, please contact us.

### Controlled by RF Dimmer



SR-2805R



SR-2805D

### Product introduction

SR-2805D is portable rotary RF dimmer with 256 levels logarithmic dimming from 1-100%.  
SR-2805R is wall rotary RF dimmer with 256 levels logarithmic dimming from 1-100%.  
Simple and friendly use for dimming and switching ON/OFF for 1zone controlled.

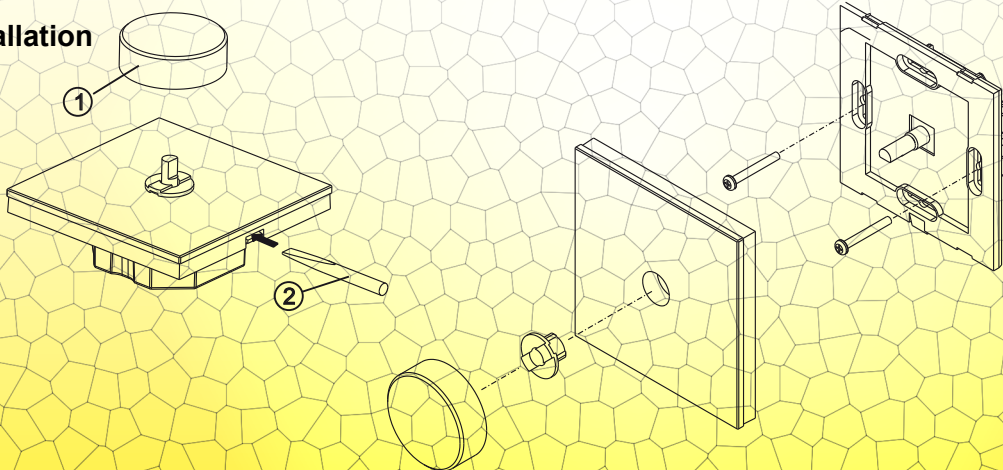
### Performance Parameter

Remote: (SR-2805D & SR-2805R)  
Operation voltage: 3VDC(CR2032 & CR2025)  
Operation frequency: 434MHZ/868MHZ

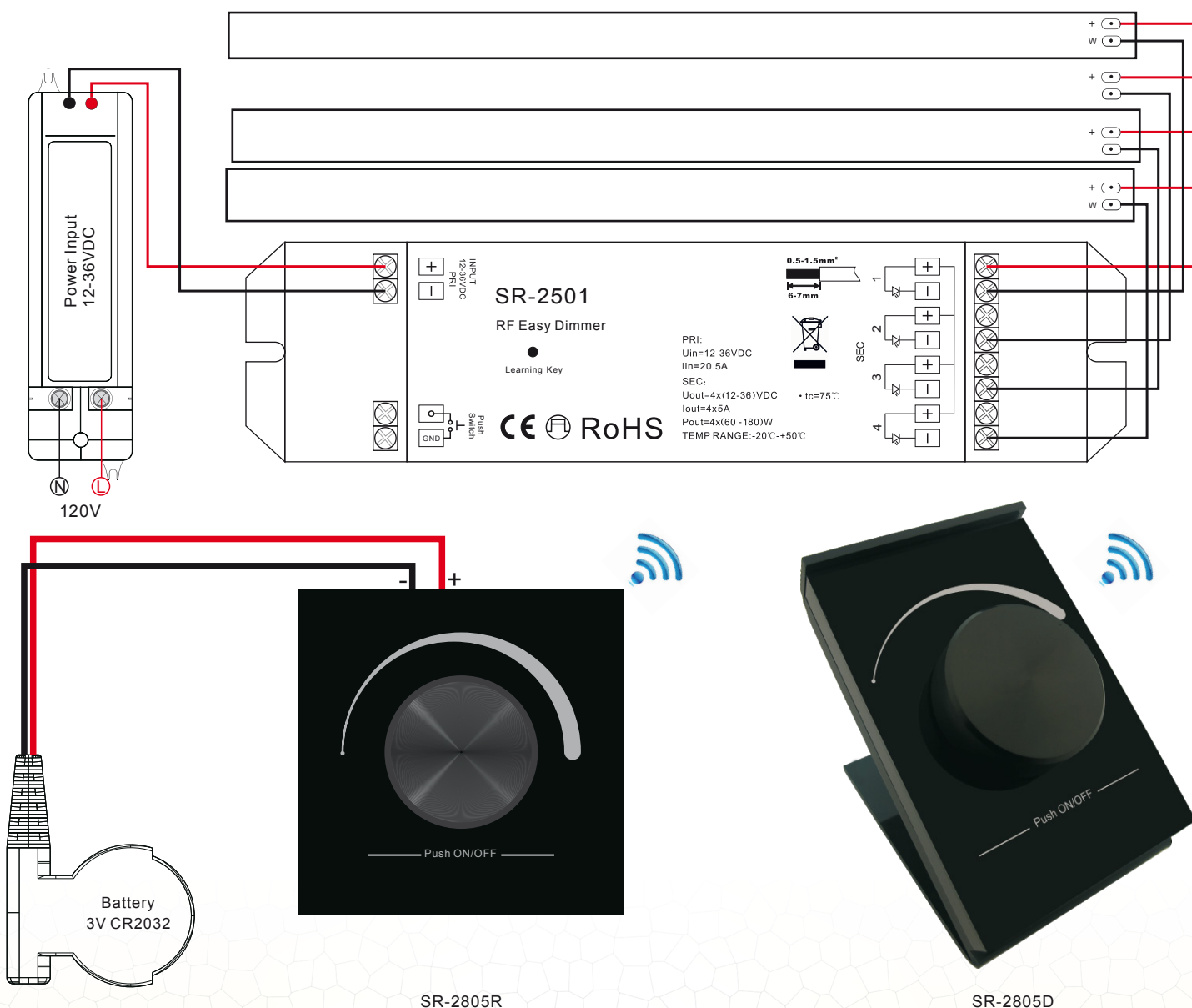
### Receiver:

SR-2501: 12-36V DC input, 4 channels x 5A, constant voltage, 4 channels x (60-180)W  
SR-2501EA: 12-24V DC input, 4 channels x 8A, constant voltage, 4 channels x (96-192)W  
SR-2502: 12-36V DC input, 4 channels x 350mA, constant current, 4 channels x (4.2-12.6)W  
SR-2503: 12-36V DC input, 4 channels x 700mA, constant current, 4 channels x (8.4-25.2)W

### Installation



## 2.2 Wiring Diagramm (RF Dimmer)



### Operation Manual

Please pair remote and receiver, after finishing connecting receivers with LED lights correctly, base on diagram above.

Press shortly the learning key - on the receiver, then push the rotary button. Once successfully learn, the LED lights will blink on the receiver. Do the same for the other receivers if you use them, you can add as many optional receivers as you want.

Short push rotary button to switch ON/OFF

Adjust dim brightness by the rotary button from left to right 1-100%

Adjust dim brightness by the rotary button from right to left 100-1%

The distance between Controller and SR-2501 must be < 15 Meter.

### 2.3 Controlled by RF (CCT / RGB include dimming function)



SR-2805CCT



SR-2805RGB

#### Product introduction

SR-2805CCT is wall rotary RF dimmer with 256 levels logarithmic dimming from 1-100%, which is suitable for dimming CCT (Correlated Color Temperature) led light.

SR-2805RGB is wall rotary RF dimmer with 256 levels logarithmic dimming from 1-100%, which is suitable for dimming /RGB(W) led light.

Simple and friendly use for dimming and switching ON/OFF for 1zone controlled.

#### Performance Parameter

Remote: SR-2805CCT/RGB

Operation voltage: 3VDC(CR2032 &CR2025)

Operation frequency: 434MHZ/868MHZ

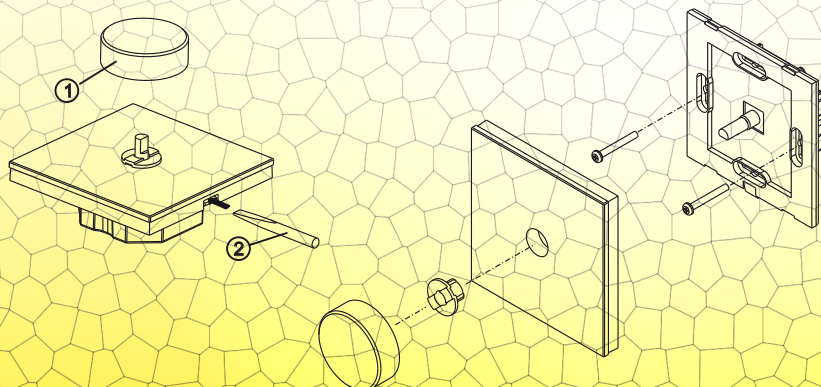
#### Receiver:

SR-2501M:12-36V DC input,4 channels x 5A,constant voltage,4 channels x(60-180)W

SR-2501MEA:12-24V DC input,4 channels x 8A,constant voltage,4 channels x(96-192)W

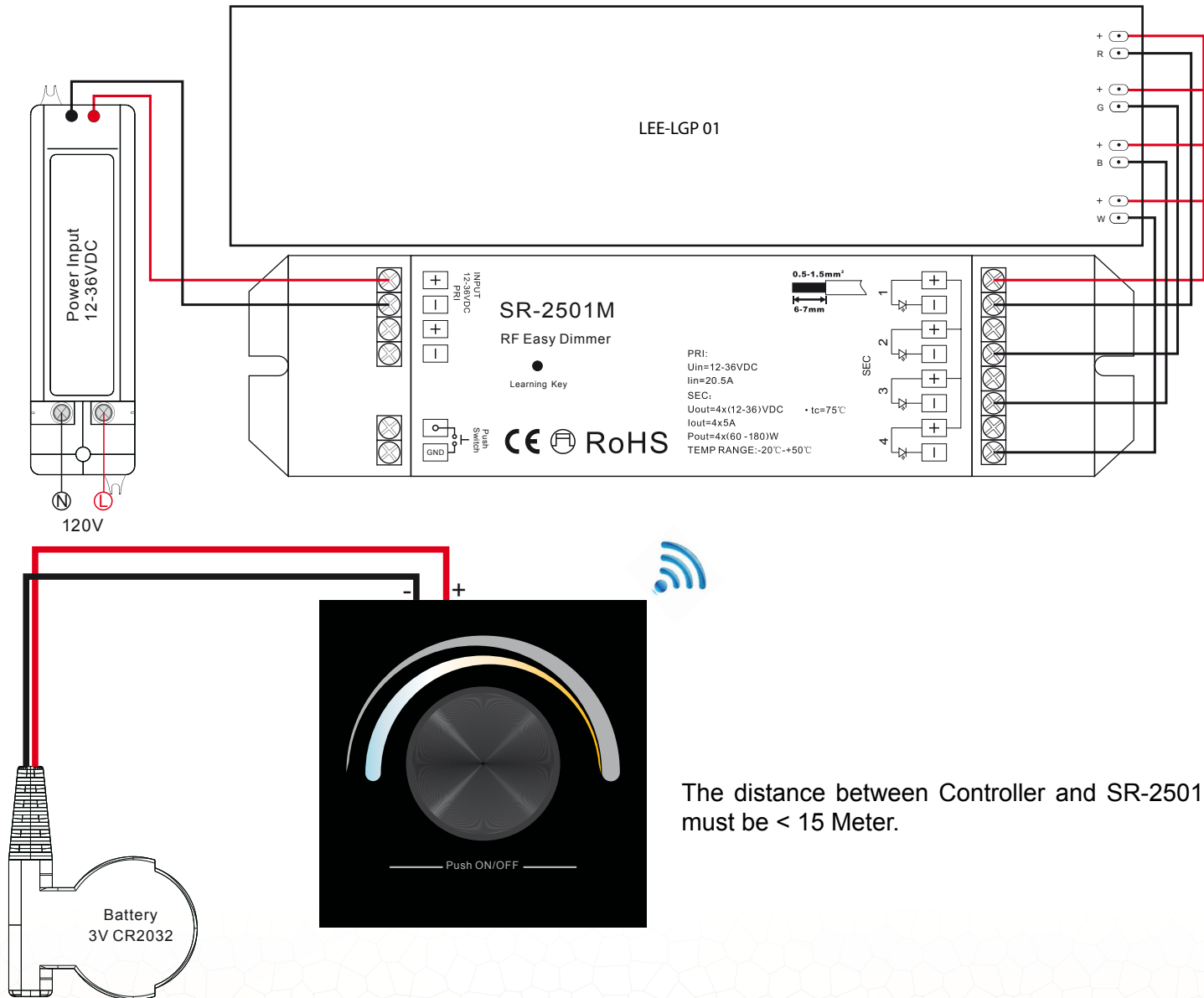
SR-2502M:12-36V DC input,4 channels x 350mA,constant current,4 channels x(4.2-12.6)W

#### Installation





## 2.4 Wiring Diagramm (RF RGB)



### Operation Manual

Please pair remote and receiver, after finishing connecting receivers with LED lights correctly, base on diagram above.

Press shortly the learning Key on the receiver, then push the rotary button. Once successfully learn, the LED lights will blink on the receiver. Do the same for the other receivers if you use them, you can add as many optional receivers as you want.

Short press once rotary button to switch ON/OFF.

Adjust dim brightness by the rotary button from left to right 1-100%

Adjust dim brightness by the rotary button from right to left 100-1%

Long press rotary button, the light will be 100% brightness

### SR-2805CCT

Double click rotary button, it will enter into dimming color temperature mode, dim WW (warm white) and CW (cold white) associatively, for example if WW is 70%, CW is 30%.

### SR-2805RGB

Double click rotary button, it will change the modus from dimming to color change of RGB light.